



One 11TS

High Pressure Homogenizer Technical datasheet

The One series homogenizers, compliant to EU safety rules (CE standards) and built according to EN ISO 9001:2008 Quality System, are the best fit for dairy, food & beverage applications.

Liquid end

- Engineered with a reduced number of parts for simplified use and maintenance
- High quality forged stainless steel and special high wear resistant materials for best mechanical and corrosion resistance performance
- Monoblock construction compression head
- Ball (PVB) pumping valves

Homogenizing valve

- Wear parts in solid tungsten carbide for extended operation.

- One stage with pneumatic adjustment from the machine's control panel
- Second homogenizing stage as option

Power end

- Cast iron power frame
- Heavy duty and reliable power frame housing the transmission elements
- AC motor drive
- Splash lubrication
- "V" belts drive / Direct belt drive
- Forged special alloy steel crankshaft on roller bearings
- Splash lubrication

One 11TS

High Pressure Homogenizer

Available up to 250 bar, suitable for CIP and SIP, the One machines are the fit for purpose solution for small and medium size process line. The energy efficient solution of One range, allows to reduce consumptions and optimize the running costs.

Casing

- Polished stainless steel machine casing on galvanized steel frame
- Easy access and maintenance with removable panels
- The casing includes a stainless steel terminal box/electrical panel directly accessible from the outside

Plungers

- Chrome coated stainless steel
- Self centering clamped connection

Tools and spare parts

- Ordinary maintenance tools and one set of emergency spare parts supplied with the machine
- O&M manual and spare part list on CD-ROM

Pump valves

- SS alloy removable and reversible valve seats
- Ball type (PVB) pumping valves in SS alloy

Product line connections

- DIN 11851 fittings
- Tri-Clamp™ fittings

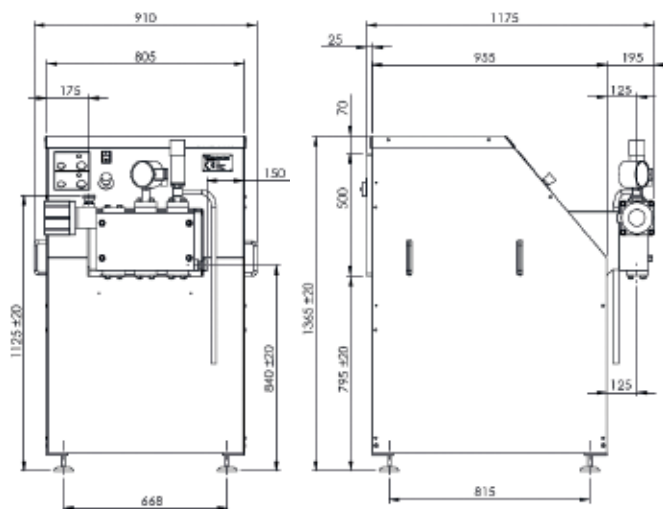
Pressure gauge

- Sanitary design analog high pressure gauge

Main options

- 2nd stage homogenizing valve
- Electric power board inside the machine casing (access from the back)

Dimensional drawing



Overall dimensions (mm)

Performance

Pressure (bar)	Max Flow Rate (l/h)	Pressure (bar)	Max Flow Rate (l/h)
100	3300	200	1650
130	2500	210	1550
150	2200	250	1300
180	1800		

Design features

Number of plungers	3
Stroke	60 mm
Absorbed motor power up to	11 kW
Net weight	850 kg
Gross weight	1000 kg
Lubricating water	90 l/h
Lubricating oil ISO VG 150	9 l

GEA Italy

GEA Mechanical Equipment Italia S.p.A.

Via A. M. Da Erba Edoari, 29

43123 Parma, Italy

Phone +39 0521 965 411

Fax +39 0521 242 819

gea.com/contact