



POWDEREYE®

The in-line analysis platform for the main powder properties

In-line powder analysis (patent pending)

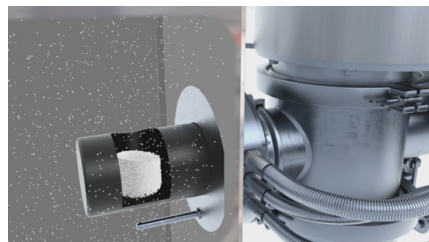
Even the smallest deviation in quality and consistency during the drying process can lead to downstream problems, rejected product or loss of production time.

The POWDEREYE® from GEA is the in-line analysis platform for the main powder properties. The POWDEREYE® provides fast powder measurements to the operator, thereby helping to prevent costly out of spec production. The measurements also form a basis for final product control and process adjustments by the operators or advanced process optimization software such as OptiPartner.

Powder properties

The POWDEREYE® is situated after the last drying stage and measures continuously:

- Residual moisture
- Dark particles (by hi-res imaging)
- Bulk density
- Packed density
- Optional: Protein and fat content



Powder sampling

The POWDEREYE® collects a sample in the product flow for presentation to the individual instruments.

The powder is either returned to the product flow or discharged through an external sample collection port.

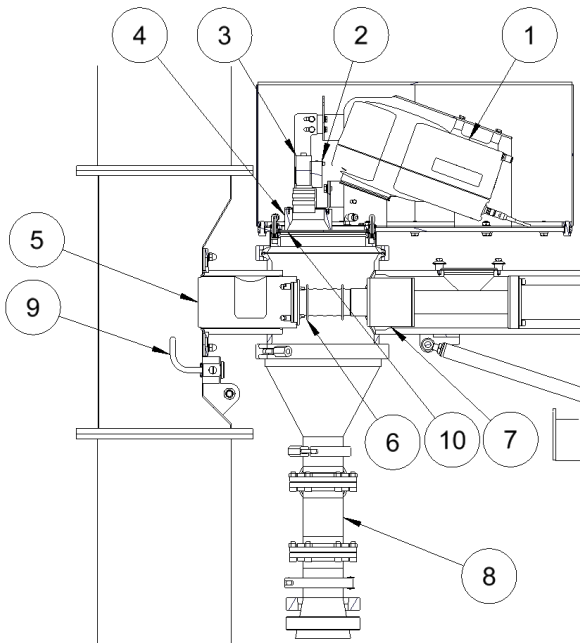
The POWDEREYE® includes an auto sampler function operated by the local touch panel or from the SCADA system. A 200 ml sample is collected from the product stream and discharged to a sample container.

POWDEREYE®

Residual moisture

The residual moisture content is measured by NIR (near infrared) technology and provides a precise result with low variation due to a repeatable sample presentation and large measurement area size.

The NIR instrument is setup using product specific algorithms and will provide accurate moisture % readings when calibrated precisely for each product recipe.



Position	Description
1	NIR-sensor
2	Laser distance sensor
3	Camera
4	LED light ring
5	Sampling Cup (217 ml)
6	Load Cell
7	Vibrator
8	External sample port
9	Pneumatic CIP lance
10	Sapphire glass plate

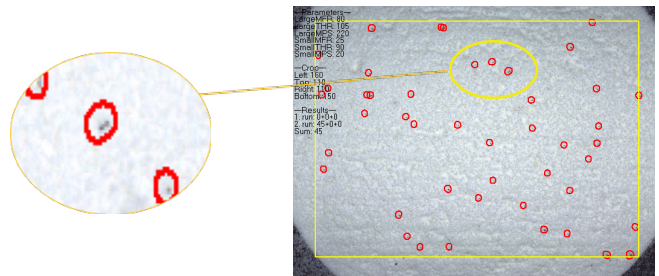
Product density

Both bulk and packed density is measured precisely and with high repeatability as there is very limited powder handling.



Color and dark particles detection

A high resolution camera is used for color determination and detection of dark scorched particles. The sensitivity of the imaging procedure can be adjusted to detect particles down to 100 µm diameter. An alarm for dark particles can be set to trigger a sample being sent to the external sample collection container – ready to be picked up for standard scorched particle test.



Hygienic design

All components in contact with product are made of stainless steel, except for the sample cup which is made of anti-static polypropylene complying with EU regulation no. 10/2011. The POWDEREYE® conforms to Directive 2014/34/EU (ATEX) and is suitable for Zone 22 D.

GEA Denmark

GEA Process Engineering A/S
 Gladsaxevej 305
 2860 Soeborg, Denmark

Tel +45 3954 5454
 Fax +45 3954 5800

gea.com/contact
 gea.com