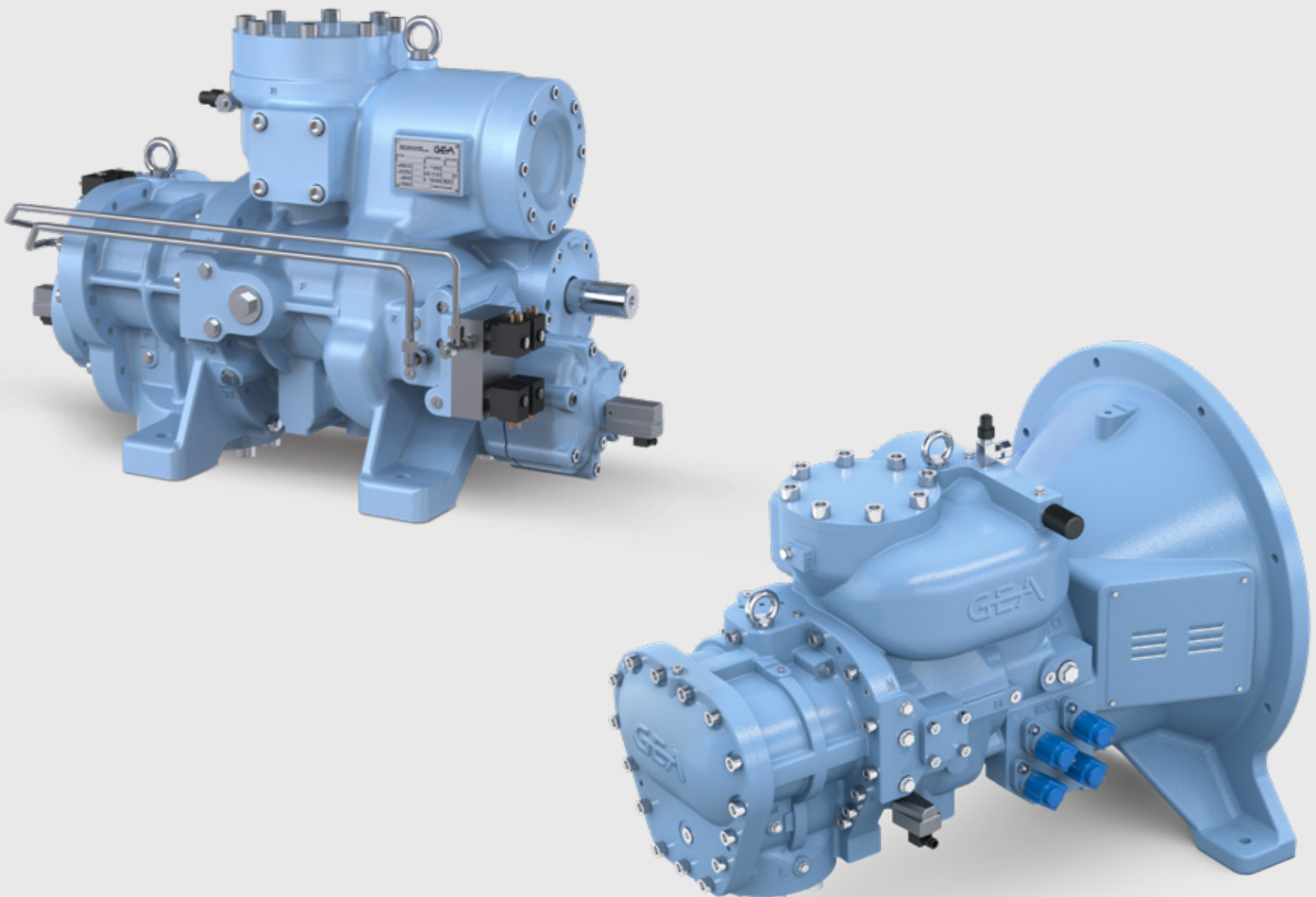


# GEA SCREW COMPRESSOR RETROFIT

Upgrade and Modernize any GEA Screw Compressor Package  
with a New GEA Screw Compressor





# BACKGROUND

When a screw compressor is due a major service, or is under-performing, there is a simple GEA service solution available to improve the efficiency, reliability and serviceability of your existing GEA Screw Compressor Package.

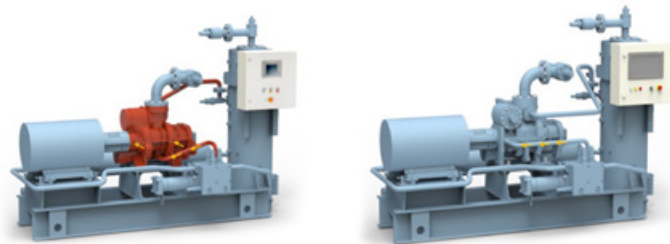
Like for like compressor service exchange has many benefits, but when your existing GEA compressor is of former design (SH/MC), it is also easy to upgrade to the latest available screw compressor technology (M-Series), providing immediate reliability and energy savings with long term benefits.

Energy savings are guaranteed<sup>1</sup> when retrofitting from the former SH or MC Series to M Series as the latest compressor technology offers an increased efficiency in the region of 3 to 5%, with up to 7% possible, when utilizing variable/optimized Vi control. Combining this with any wear on the existing compressor will further improve the compressor package performance and increase the likelihood of significant energy savings.

Retrofitting a GEA Screw Compressor is made easy for our customers with comprehensive documentation, including a detailed service guideline and checklist to support upfront sales and site execution planning.

## Benefits of GEA Screw Compressor Retrofit

- More efficient
- Improved reliability
- More service friendly
- Improved spare parts availability
- Reduce overall operating costs
- Sustainable solution
- Full GEA standard warranty
- Extend the life of your GEA compressor package



Before

After

## Additional Benefits with Options

- Maximize compressor COP by retrofitting from Fixed Vi to Variable Vi
- Optimize compressor energy, reliability, and safety when retrofitting with a GEA Omni Retrofit Panel
- With GEA Omni fitted, subscribe to GEA InsightPartner® Blu-Red Care to digitally optimize the availability and safety of your equipment
- With GEA Omni fitted, subscribe to GEA OptiPartner® Blu-Red Energy which focusses on continued energy optimization and reduced CO<sub>2</sub> footprint.

## How easy is it to retrofit a new GEA Screw compressor on to an existing older GEA package?

It is **very simple** to replace an older GEA Screw Compressor as it requires **minimal alteration** to adapt the new GEA Screw Compressor to the existing package configuration, so when planned proactively, a new compressor can be up and running in **less than 2 days**<sup>2</sup>.

## Will the new GEA Screw Compressor operate more efficiently?

Yes, as an absolute minimum, the new compressor will provide **instant energy saving** benefits, **up to 25%**<sup>3</sup> is possible, depending upon the condition of the old compressor.

## A new compressor is typically more expensive than other options available?

A new compressor is one of several service options GEA has available to satisfy the business needs of different customers, and although there are lower cost solutions, it has the **shortest Return on Investment (ROI)** at **less than 3 years**<sup>4</sup> in most cases.

GEA Screw Compressor Retrofit is just one service option from the **GEA Screw Compressor Service Portfolio**, designed to help any customer find the best fit solution when their compressor is due a major service.

For more information or support please reach out to your local GEA representative.

<sup>1</sup> Guaranteed based on like for like theoretical operational data only.

<sup>2</sup> Average installation time for SH and MC to M Series excluding installation of GEA Omni.

<sup>3</sup> Based on like-for-like performance MC vs M Series plus 10% degradation of old compressor, when installed with GEA Omni.

<sup>4</sup> Based on M Series (MM) at -10/+35 fixed Vi and the old compressor COP reduced by 5% through lifetime degradation.



# GEA Screw Compressor Service Portfolio

Helping customers proactively plan a major service to satisfy any business needs

GEA Screw Compressor Product		ROI <sup>1</sup>	Energy Savings <sup>1</sup>	Down time	Reliability	Warranty	Sustainability	
Upgrade	 <b>New GEA Screw Compressor Package</b>	GEA Digital Ready	< 4 Years	≤ 30%	≤ 7 Days	Optimum	Performance	Reduce
	 <b>New GEA Screw Compressor Retrofit or Exchange with GEA Omni</b>	GEA Digital Ready	< 2 Years	≤ 25%	≤ 3 Days	Superb	Performance	Reduce/Re:use
	 <b>New GEA Screw Compressor Retrofit or Exchange</b>		1–3 Years	≤ 15%	≤ 2 Days	Excellent	Performance	Reduce/Re:use
Maintain	 <b>GEA Berlin Center of Excellence Remanufacturing</b>		1–3 Years	≤ 10%	≤ 10 Weeks	Excellent	Performance	Remanufacture
	 <b>GEA Service Centre Overhaul by GEA Specialists</b>		Possible	Possible	≤ 1 Weeks	Good	Functional	Repair
	 <b>GEA Service Kit Overhaul by GEA or 'other'</b>		n/a	n/a	≤ 2 Weeks	Good	Parts only	Repair

<sup>1</sup>Energy Savings based on combination of factors; including improved compressor COP when retrofitting from former series, ≤10% reduction in old compressor COP due to 'wear factor' at ~10 years / ~ 50,000 run hours, and where GEA Omni is fitted additional energy savings ≤5% using the standard optimization features (further savings possible if GEA Omni is combined with GEA InsightPartner® Blu-Red Care and GEA OptiPartner® Blu-Red Energy products)



**GEA Refrigeration Technologies GmbH**

Holzhauser Str. 165

13509 Berlin, Germany

Phone +49 30 43592-600