

# GEA InsightPartner® Separation Monitoring + mobile router

## Features, benefits and technical information



Subject to modifications.

**GEA InsightPartner® Separation Monitoring**, the online condition monitoring for GEA centrifuges, includes continuous tracking of machine asset parameters such as vibrations and bearing conditions using data analytics and additional sensors\*. The system visualizes real-time and historical data, enabling early detection of potential issues, timely maintenance and reduced downtime.

### Product features of InsightPartner® Separation Monitoring + mobile router

#### Continuous monitoring – online and local

- Our condition monitoring system offers full transparency both online via the GEA Cloud®, with secure data access through the GEA Portal in compliance with the latest industry standards, and on-site via the HMI. Online access is provided via mobile router and SIM card\*\*.

#### User interface

- Clearly structured dashboards enable users to monitor and analyze vibrations and machine parameters, offering features such as customizable views, real-time updates, and visual data comparison functions.

#### Trend analysis and anomaly detection

- Trends and alarms provide insight into current and historical vibration and bearing conditions
- Allows users to compare different time periods.
- Automated root cause indications and help texts

#### Data export and API integration

- The solution includes an API for data export, allowing for integration with other systems and enabling further analysis or reporting.

#### Support and analytics

- GEA's network of process experts supports the system, offering assistance and advanced analytics to further optimize operations.\*\*\*

### Your benefits

GEA InsightPartner® Separation Monitoring improves the reliability, efficiency and service life of your machines through continuous monitoring, early problem detection, automated root cause analysis and remote support.

#### Enhanced operational reliability

- Continuous monitoring of real-time vibrations and machine parameters ensures that your machines operate reliably, and unexpected failures are minimized.

#### Increased equipment efficiency

- Pre-alarms and main alarms, which can also be transmitted via push notification, serve as early indicators of potential problems.
- Early detection enables timely intervention and improves the overall efficiency of your centrifuge.

#### Faster troubleshooting with automated insights

- The system automatically identifies root causes and provides helpful guidance for counter measures, reducing downtime and simplifying maintenance.

#### Better plannability, lower maintenance costs

- Preventive maintenance reduces the need for costly repairs and extends the service life of your machine.

#### Remote support

- Depending on your Service Level Agreement, we continuously monitor your system and keep you proactively informed. You can thus benefit from fast expert support and remote diagnostics before issues become actual problems.

\* The centrifuge is equipped with additional vibration sensors measuring vibration velocity and acceleration on different positions around the machine.

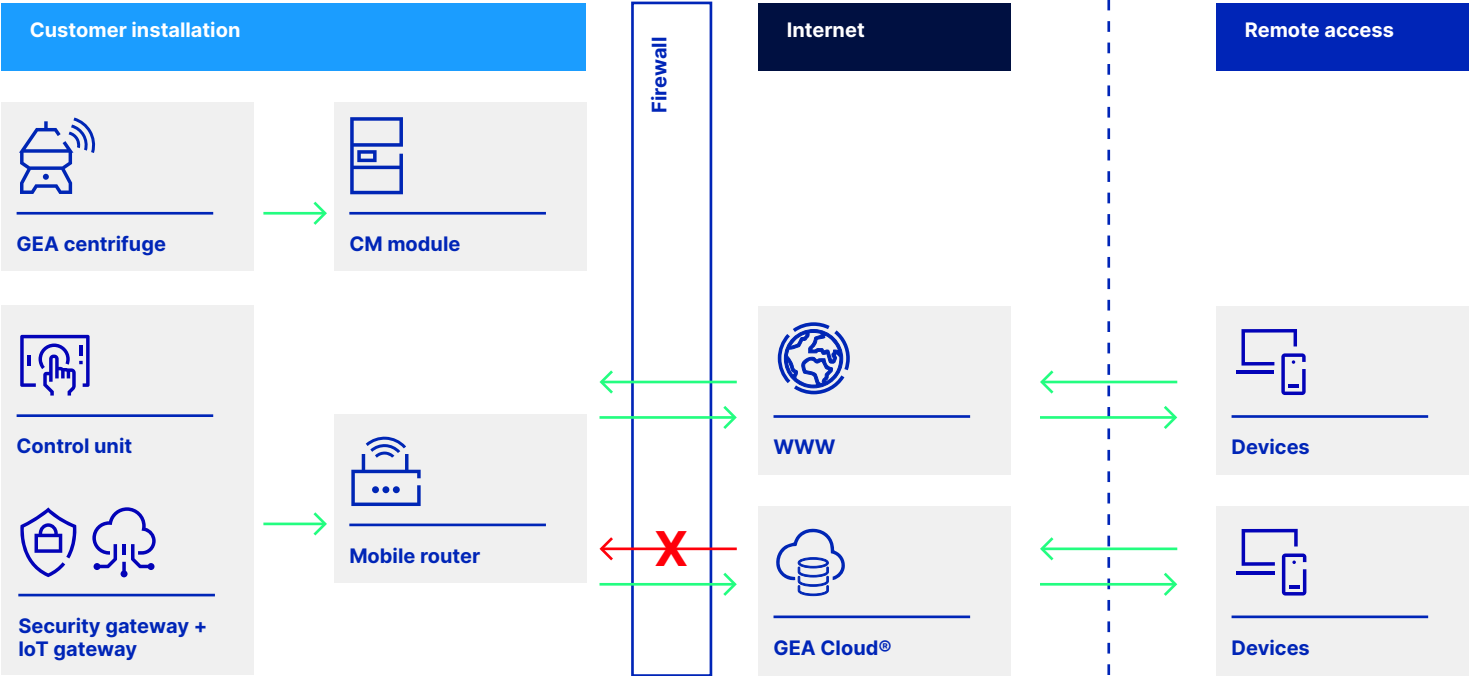
\*\* Observe country authorizations.

\*\*\* 2<sup>nd</sup> and 3<sup>rd</sup> level remote support provided on demand against hourly rate or incorporated in a Service Level Agreement.

# Main components of the condition monitoring system

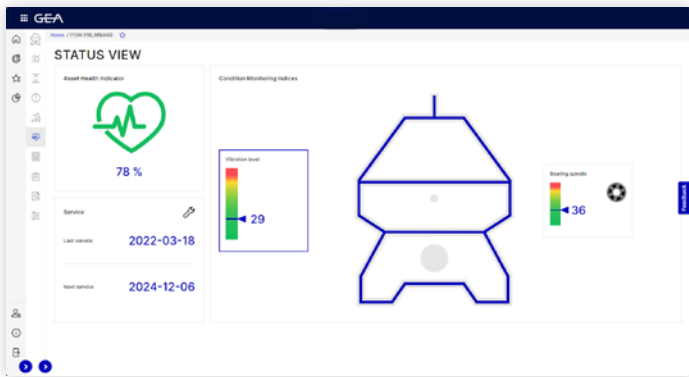
Item	Description
Vibro analyzer	IFM
Sensors (IEPE)	CTC
Mobile router	Mobile communication standard

## Network topology



## Sample screens

### Machine status



### Vibration trending

