



Multi Way Rotary Tube Selector Valves

Multi Way Rotary Tube Selector Valves

Overview

Pneumatic multi-port rotary tube selector valves divert pressurised conveying lines from one line, up to a maximum of sixteen lines. Flow can also be converged from multiple lines into one line. The Rotary Tube Selector Valve is often used to replace a series of two-way valves, thereby simplifying the system, and reducing maintenance.

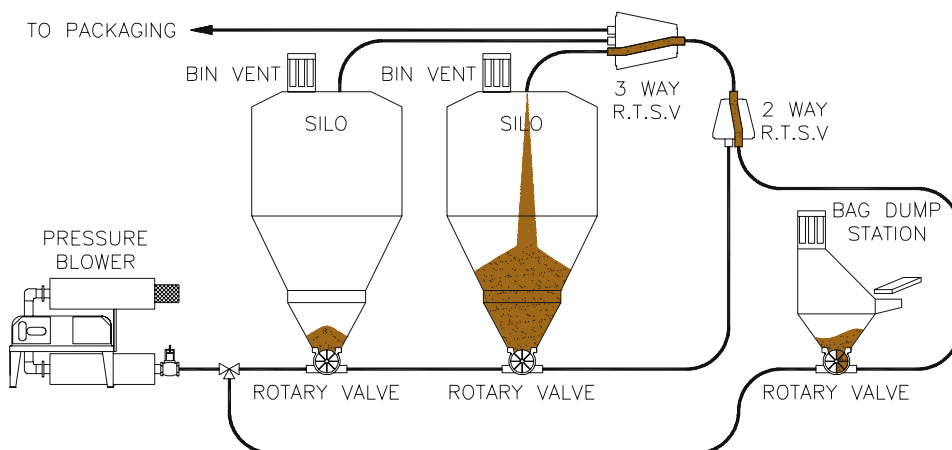
Conveying line selection is fully automated and controlled from one location. Solid piping provides higher temperature and pressure ratings and is less susceptible to wear than flexible-hose stations. GEA Nu-Con's unique, time-tested inflatable seals are used on all ports to assure airtight conveying. The compact rotary configuration saves space.

Features and Options

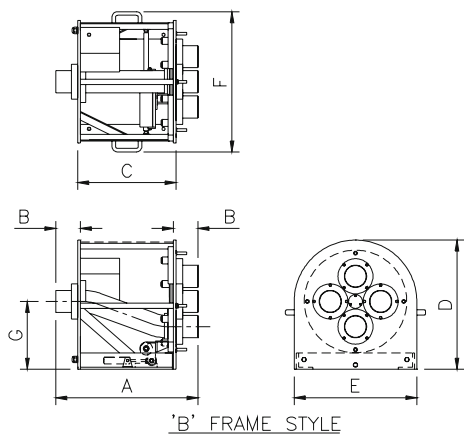
- Vacuum or pressure systems.
- Mounts horizontally or vertically.
- Fully pneumatic operation.
- Unique, bi-directional pneumatic-indexing design assures positive port alignment.
- Optional GEA Nu-Con connecting pipe-work adaptors to facilitate quick & easy seal replacement.
- Sanitary construction & tool-free disassembly options are available.
- Optional stainless steel or transparent plastic covers.
- Uniform smooth bore allows constant velocity, minimises pressure loss and ensures clean purging.
- Stainless steel and carbon steel construction.
- Seal inspection/replacement via transparent window option.
- Seal inflation failure alert, causing cessation of operation until replaced.
- Valves can be used in dilute or dense phase systems, with line pressures up to 5 bar (75 PSIG) or full vacuum.
- Unused ports are automatically sealed off.
- Suitable for both converging and diverging product flows.
- Seals inflate and deflate automatically.
- USDA 3A Dairy accepted & CE certified models available.
- Can be optionally controlled through on-board PLC or via customers' own plant PLC system.



Application



Technical Data



PNEUMATIC DRIVE										
LINE SIZE OD.	PORTS	FRAME	A	B	C	D	E	F	G	MASS
100 75 65 50	3-4 3-6 3-7 3-8	B ₁	630	104	454	590	560	640	310	140Kg
150 125 100 75 65 50	3-4 3-5 5-6 7-8 8-10 9-12	B ₂	730	104	554	695	670	750	360	190Kg
200 150 125 100 75 65 50	3-5 5-7 6-8 7-10 9-12 11-14 13-16	B ₃	1150	214	754	925	900	980	475	400Kg

Excellence • Passion • Integrity • Responsibility • GEA-versity

GEA Group is a global engineering company with multi-billion euro sales and operations in more than 50 countries. Founded in 1881, the company is one of the largest providers of innovative equipment and process technology. GEA Group is listed in the STOXX® Europe 600 Index.



GEA Avapac Ltd.

12-18 Foreman Road, PO Box 10266, Te Rapa, Hamilton 3241,
New Zealand
Tel: +64 7 849 3414, Fax: +64 7 849 3494
info.avapac.nz@gea.com

GEA Nu-Con Ltd.

20 Fairfax Avenue, PO Box 12-264, Penrose, Auckland 1642,
New Zealand
Tel: +64 9 579 2044, Fax: +64 9 579 1121
sales.nucon.nz@gea.com

GEA Process Engineering B.V.

Munsterstraat 5, 7418 EV Deventer
Postbus 2064, 7420 AB Deventer, Netherlands
Tel: +31 570 663 366, Fax: +31 570 663 377
info.gpnl.nl@gea.com

GEA Process Engineering Inc.

1600 O'Keefe Road, Hudson, Wisconsin 54016,
United States of America
Tel: +1 715 386 9371, Fax: +1 715 386 9376
gea-pe.us@gea.com