



## Tube Selector Valves

# Tube Selector Valves

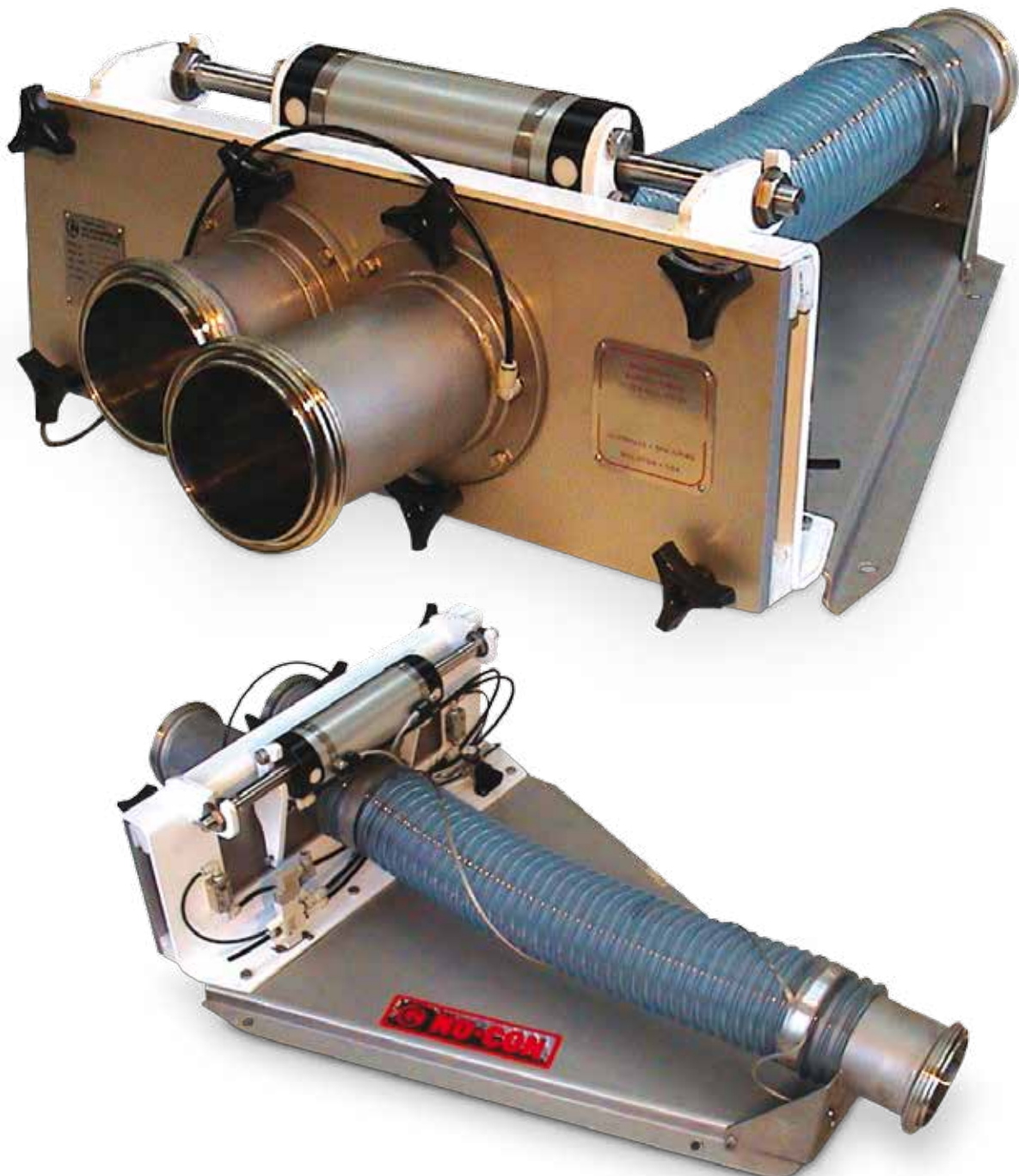
## Overview

Designed to divert powder and granular materials in vacuum or pressure conveying systems. Inflatable seals between slide-plate and stationary ports are airtight to prevent conveying air leakage, product loss and cross contamination. Hand demountability allows access to all product contact areas for efficient cleaning, making these valves suitable for use in all dairy, food, pharmaceutical & chemical applications.

All valves are manufactured with stainless steel and/or food grade material product contact parts as standard.

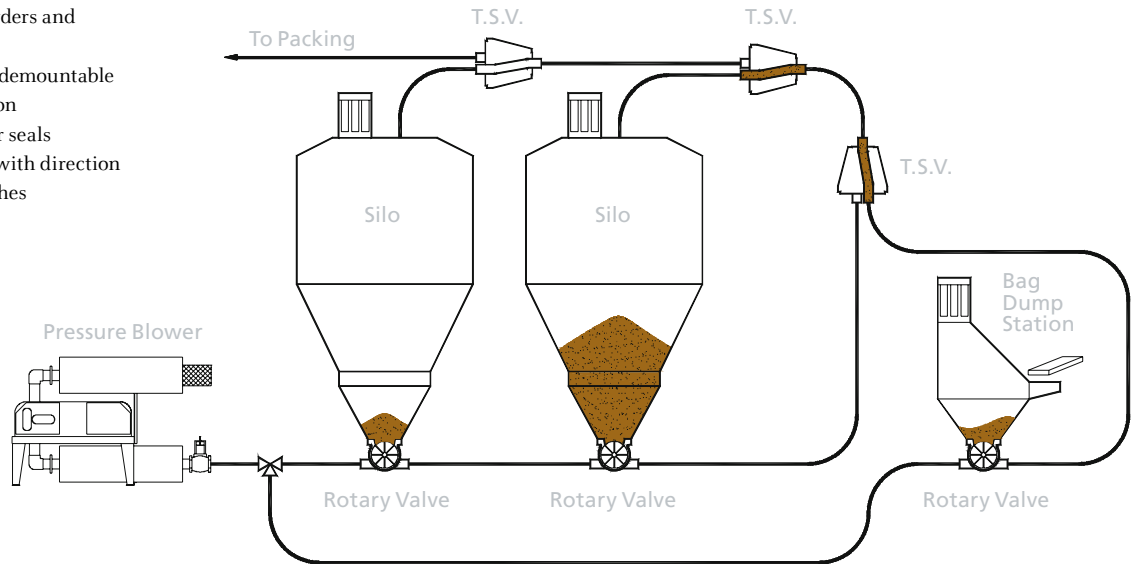
## Features and Options

- Stainless steel divert tube
- Valve enclosure
- A wide variety of process connections available
- Slide assembly available without base or hose
- Demountable seal carriers
- Safety guards included where required



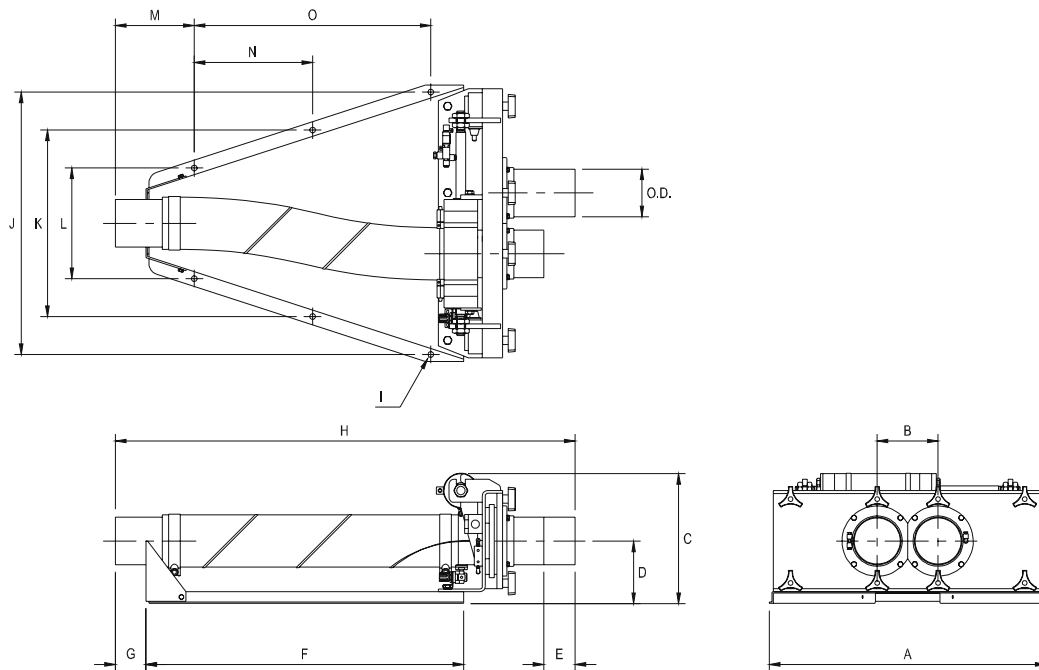
## Applications

- Suitable for all powders and granular materials
- Sanitary and hand demountable
- Automated operation
- Frictionless powder seals
- Reliable operation with direction confirmation switches



Tube selector valves used in a typical blending operation

## Technical Data



NU-CON TUBE SELECTOR VALVES																
Model	O.D.	A	B	C	D	E	F	G	H	Mounting I	J	K	L	M	N	O
50	51	410	95	229	109	67	488	65	790	4 x holes Ø12	380	—	220	168	—	275
65	64	410	95	229	109	67	488	65	790	4 x holes Ø12	380	—	220	168	—	275
75	76	590	130	277	133	67	678	65	981	4 x holes Ø12	560	—	236	168	—	505
100	102	590	130	277	133	67	678	65	981	4 x holes Ø12	560	—	236	168	—	505
125	127	796	190	380	178	67	1358	73	1675	6 x holes Ø12	744	526	308	232	525	1050
150	152	796	190	380	178	75	1358	150	1844	6 x holes Ø12	744	526	308	309	525	1050
200	203	1000	250	483	239	102	1790	140	2307	6 x holes Ø12	770	450	230	165	900	1680

Note: All dimensions in mm. Sizes shown are for standard plastic divert tube option – dimensions vary for stainless steel divert tube option.

*We live our values.*

Excellence • Passion • Integrity • Responsibility • GEA-versity

GEA Group is a global engineering company with multi-billion euro sales and operations in more than 50 countries. Founded in 1881, the company is one of the largest providers of innovative equipment and process technology. GEA Group is listed in the STOXX® Europe 600 Index.



**GEA Avapac Ltd.**

12-18 Foreman Road, PO Box 10266, Te Rapa, Hamilton 3241,  
New Zealand  
Tel: +64 7 849 3414, Fax: +64 7 849 3494  
info.avapac.nz@gea.com

**GEA Nu-Con Ltd.**

8 Fisher Crescent, Mt Wellington, PO Box 12-264, Penrose,  
Auckland 1642, New Zealand  
Tel: +64 9 276 2388, Fax: +64 9 259 0172  
sales.nucon.nz@gea.com

**GEA Process Engineering B.V.**

Munsterstraat 5, 7418 EV Deventer  
Postbus 2064, 7420 AB Deventer, Netherlands  
Tel: +31 570 663 366, Fax: +31 570 663 377  
info.gpnl.nl@gea.com

**GEA Process Engineering Inc.**

1600 O'Keefe Road, Hudson, Wisconsin 54016,  
United States of America  
Tel: +1 715 386 9371, Fax: +1 715 386 9376  
gea-pe.us@gea.com