



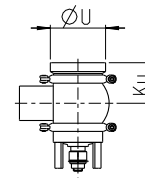
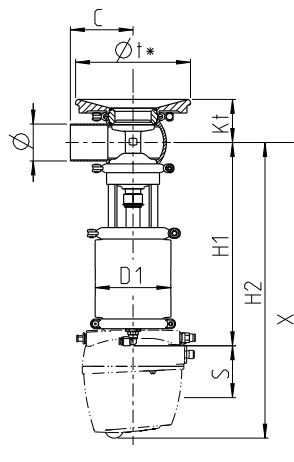
D-tec® Valve Technology – Order Code

Tank Bottom Valve N/DV

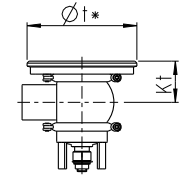


Technical data of the standard version

Recommended flow direction	Against the closing direction	
Material	Housing	1.4404/AISI 316L
	Diaphragm	D-tec®
	Valve seat seal	EPDM
	Housing seal	EPDM
	Not in contact with the product	1.4301/AISI 304
Ambient temperature	0 to 45 °C (32 °F to 113 °F)	
Operating temperature	Max. 135 °C (275 °F)	
Sterilization temperature	Max. 150 °C (302 °F) for 30 min	
Air supply pressure	6 bar (87 psi)	
Product pressure	5 bar (73 psi)	
Surface in contact with the product	$R_a \leq 0.8 \mu\text{m}$	
External housing surface	Matte blasted	
Control and feedback system	Connection 0 (without control top)	
Actuator type	Pneumatic actuator air/spring	
Connection fittings	Welding end	
Identification	Adhesive ID tag	
Valve seat version	Clamped seat ring	



Housing connection U



Housing connection T

	Pipe	Housing	Actuator	Dimensions			Housing connection U		Housing connection T		Valve	
Nominal width	Ø [mm]	C [mm]	D1 [mm]	H1 [mm]	H2 [mm]	Extension X [mm]	Ku [mm]	Øu [mm]	Kt [mm]	Øt* [mm]	Stroke [mm]	Weight [kg]
DN 25	29.0 × 1.50	90.0	99	294	423	508	50.0	70 × 2.0	49.0	145	16	7
DN 40	41.0 × 1.50	90.0	110	335	464	549	56.0	85 × 2.0	55.5	165	18	9
DN 50	53.0 × 1.50	90.0	110	341	470	555	62.0	85 × 2.0	61.5	165	30	9
DN 65	70.0 × 2.00	125.0	135	352	481	626	78.0	114 × 2.5	76.0	200	30	14
DN 80	85.0 × 2.00	125.0	135	360	489	634	85.5	114 × 2.5	83.5	200	30	15
DN 100	104.0 × 2.00	125.0	170	399	528	673	95.0	154 × 2.0	92.5	225	30	21

OD 1"	25.4 × 1.65	90.0	99	292	421	506	48.0	70 × 2.0	47.0	145	12	7
OD 1 ½"	38.1 × 1.65	90.0	110	337	466	551	54.5	85 × 2.0	54.0	165	18	9
OD 2"	50.8 × 1.65	90.0	110	343	472	557	60.8	85 × 2.0	60.3	165	30	9
OD 2 ½"	63.5 × 1.65	125.0	135	356	485	630	75.0	114 × 2.5	73.0	200	31	14
OD 3"	76.2 × 1.65	125.0	135	363	492	637	81.5	114 × 2.5	79.5	200	29	14
OD 4"	101.6 × 2.11	125.0	170	401	530	675	93.8	154 × 2.0	91.3	225	30	21

* The maximum wall thickness of the tank can be 8 mm.

Position	Description of the order code for the standard version*1		
1	Valve type		
	N D-tec® Single-seat bottom valve		
2	Housing combinations		
	<div><div>F*2</div><div>D*2</div></div>		
3	Supplement to the valve type		
	/DV D-tec® stem diaphragm (hermetic sealing)		
4	Nominal width housing		
	DN 25	OD 1"	
	DN 40	OD 1 ½"	
	DN 50	OD 2"	
	DN 65	OD 2 ½"	
	DN 80	OD 3"	
	DN 100	OD 4"	
5	Actuator type		
	S Air/Spring		
6	Non-actuated position		
	Z Spring-to-close (NC)		
	A Spring-to-open (NO)		
7	Standard configuration with 6 bar air supply pressure for 5 bar product pressure (higher pressures on request)*3		
	Actuator (spring-to-close)	Actuator (spring-to-open)	For nominal widths
	AA	AA	DN 25, OD 1"
	BB	BA	DN 40, DN 50, OD 1 ½", OD 2"
	CD	CB	DN 65, DN 80, OD 2 ½", OD 3"
	DF	DD	DN 100, OD 4"
8	Valve seat version housing		
	L0 Loose seat ring/clamp connection		
9	Housing and valve seat sealing (valve disc soft sealing)*4		
	1 Housing seal EPDM (O-ring), valve seat seal EPDM (V-ring)		
	2 Housing seal FKM (O-ring), valve seat seal FKM (V-ring)		
	3 Housing seal HNBR (O-ring), valve seat seal HNBR (V-ring)		
	6 Housing seal VMQ (O-ring), valve seat seal see position 13		
10	Surface quality of the housing		
	2 Inside R _a ≤ 0.8 μm, outside matte blasted (DN, OD)		
11	Connection fittings		
	N Welding end		
12	Valve seat sealing (valve disc hard sealing)		
	/07 Valve seat seal TEFASEP® gold (O-ring)*5		
13	Accessories		
	/T Housing connection T		
	/U Housing connection U		
	/52 Adhesive ID tag		
+			
14–19	Air connection/Control and feedback system		
	00000M Metric for air hose Ø 6/4 mm		
	00000Z Inch for air hose Ø OD ¼" (6.35/4.35 mm)		

The code is composed as following, depending on the chosen configuration:

Position	1	2	3	4	5	6	7	8	9	10	11	12	13	14 to 19					
Code	N		/DV	-	/	-	S		-	L0	-	2	N						

*1 Further options see catalog Hygienic Valves VARIVENT® and ECOVENT®

Valve options register 8, control and feedback systems register 10

*2 Optionally with housing connection flange U or housing connection flange T (see position 13)

*3 Standard configuration for hard-sealing valve disc may deviate

*4 Valve disc hard sealing must be configured with position 12

*5 Valve disc hard sealing available in combination with EPDM or VMQ housing sealing

We live our values.

Excellence • Passion • Integrity • Responsibility • GEA-versity

GEA is a global technology company with multi-billion euro sales operations in more than 50 countries. Founded in 1881 the company is one of the largest providers of innovative equipment and process technology. GEA is listed in the STOXX® Europe 600 Index. In addition, the company is included in selected MSCI Global Sustainability Indexes.

GEA Germany

GEA Tuchenhausen GmbH
Am Industriepark 2-10
21514 Büchen, Germany

Tel +49 4155 49-0
Fax +49 4155 2035

sales.germany@gea.com
gea.com