

# GEA CODEX® RECIPE MANAGER

Manage your master recipes with ease.

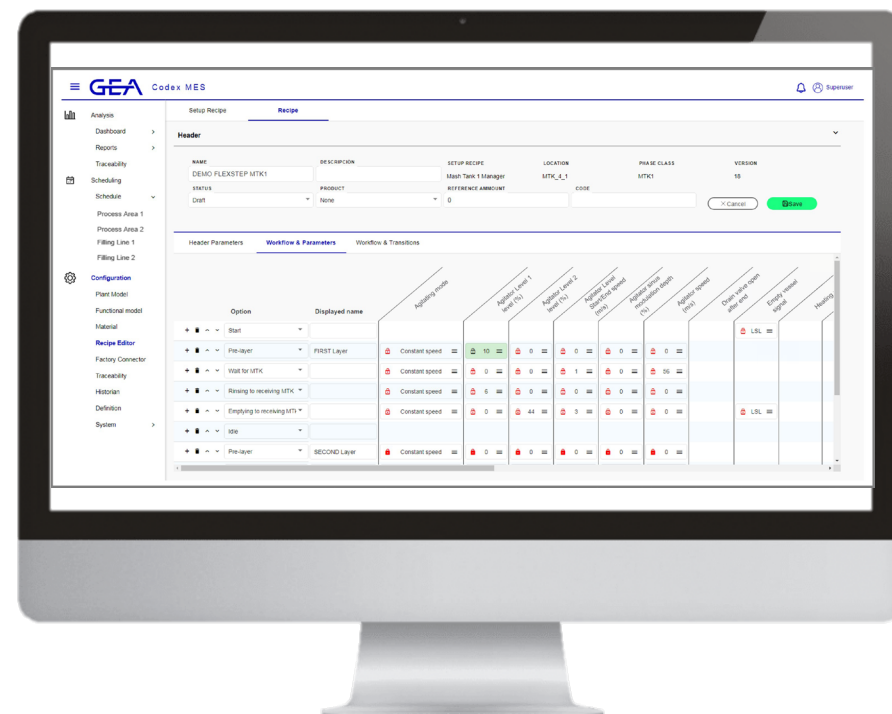


# MANAGE YOUR MASTER RECIPES WITH EASE WITH GEA CODEX® RECIPE MANAGER.

No matter how complex, the graphical system automatically produces records with recipe setpoints and all measured values.

## Your benefits:

- Single access point for data management
- Error reduction and less risk of product variation
- Consistent batch to batch production results
- Improved productivity and quality
- Lower cost of compliance
- Faster introduction of new products
- Designed for dynamic production.



User-friendly UX with modern design.

# TRACK VARIATIONS IN RECIPE VALUES.

GEA Codex® Recipe Manager is an essential part of the production process. It provides an efficient way to track variations in recipe values, generate reports and both manage and analyze recipes while keeping them safe and secure.

GEA Codex® Recipe Manager is a “double check” to validate any recipe changes and compare previous versions to ensure compliance with current legislation and transparent production. Material identification is by human readable code and RFID technology so the system can be fully automated for batch execution.

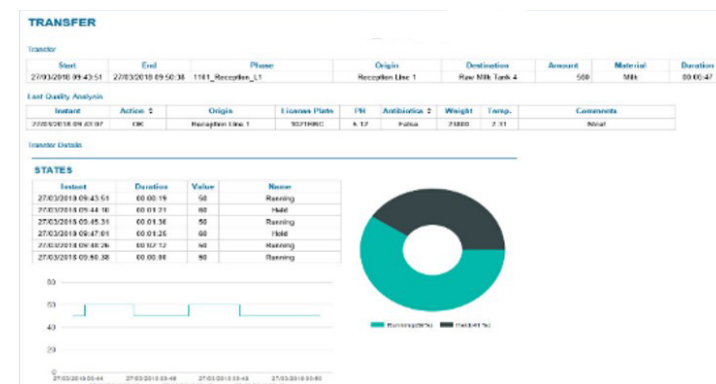
## Consistency of process parameters

In any industrial environment, recipe management and execution software sitting within the Manufacturing Execution System (MES) between the plant floor and Enterprise Resource Planning (ERP) defines the settings, parameters, ingredients, access points and quantities, etc., that ensure that product is manufactured in a consistent way.

GEA Codex® Recipe Manager expands the capabilities of [GEA Codex® Enterprise Connect](#), by transferring manufacturing execution details to ERP level. This ensures the consistency of process parameters and factors such as raw material consumption and, for example, the weight of individual items.

## Key features:

- Recipe management and execution
- Precise definition of all recipe views
- Flexible interaction at PLC level
- Real time company wide visibility of the manufacturing data
- Recipe analysis and value change tracking
- Report generation.



Standard reporting with the most useful information.

# PRODUCTION OVERVIEW WITH CODEX SCHEDULER.

GEA Codex® Scheduler enables users to timetable production and choose which orders to produce on demand. A clear visualization provides a complete overview of future production, whereby batch orders can be optimized according to allergic, color or clean-in-place (CIP) requirements if specific rules are defined.

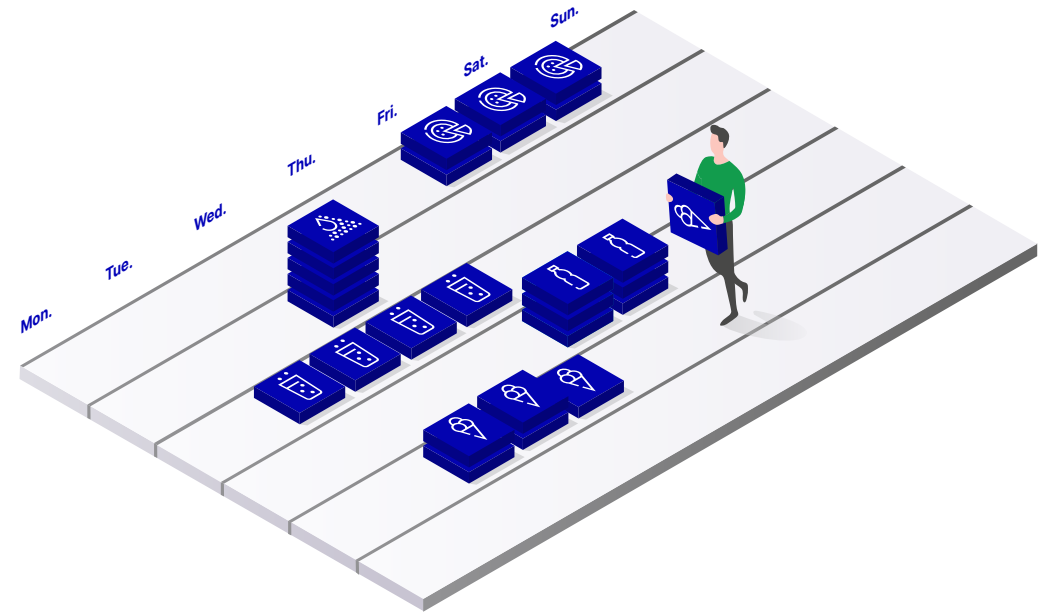
## Your benefits:

- Get a clear view to your production planning horizon
- Use production lines and their capacities for easier planning
- Focused visualization with fully flexible views
- Receive orders and report consumption with GEA Codex® Enterprise Connect.



Order	WO ID	WO Recipe	PO ID	Work Centre	Qty	Produced	Actual Duration	Progress	Auto-run
1	WO-1111	SIP	PO-1111	Tank Fermenter 1	10000	6700	1 hr 42 m	Processing	
2	WO-1111	SIP	PO-1111	Tank Fermenter 1	10000	0	0 hr 0 m	✓	2001-01-01 01:00
1	WO-3114	SIP	PO-3144	Tank Fermenter 1	10000	7563	2 hr 56 m	Alarm	
3	WO-2113	FAT	PO-2113	Tank Fermenter 2	10000	2066	0 hr 58 m	Alarm	
2	WO-3115	SIP Test January	PO-3155	Tank Fermenter 1	10000	0	0 hr 0 m	↓	
1	WO-2112	SIP	PO-2112	Tank Fermenter 1	10000	3000	1 hr 12 m	Processing	
3	WO-3117	FAT	PO-3177	Tank Fermenter 2	10000	0	0 hr 0 m	Hold	

Providing a complete overview of production using smart visualization.



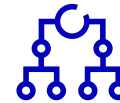
GEA Codex® Scheduler



**Split into batches:** Orders can be split into batches — manually or automatically — according to line size and availability. Batches may also be assigned to a specific production line if required. Incoming order and consumed material information can be exchanged with an ERP system (see [GEA Codex® Enterprise Connect](#)).



**Focus on visualization tools:** As a part of GEA Codex ® Recipe Manager, GEA Codex ® Scheduler enables production runs to be planned and ordered using formulas and recipes. Operators can define specific processes using clear and focused visualization.



**Prioritize ERP-derived orders:** It's possible to input and prioritize ERP derived orders into the production schedule and generate feedback reports, minimizing manual effort and maximizing accuracy. For example, orders can be split into batches or processed according to specific CIP, flow or other requirements.



**Get clear guidance:** With smart visualization providing a complete production overview, operators benefit from clear guidance when attention is needed based on defined tolerances, ingredients or parameters.

