

Table of contents..... 01

Impeller, housing and intake and drain under housing..... 02

Bearing housing, impeller and housing cover plate..... 03

Bearing housing, plug and housing cover plate - old model..... 04

Nursing kit system 6"..... 05

Discharge pipe..... 06

In-tank recirculation kit..... 07

Spreading nozzle and directional valve..... 08

Spreading nozzle pipe chart..... 09

Drain and fill indicator..... 10

Fill opening..... 11

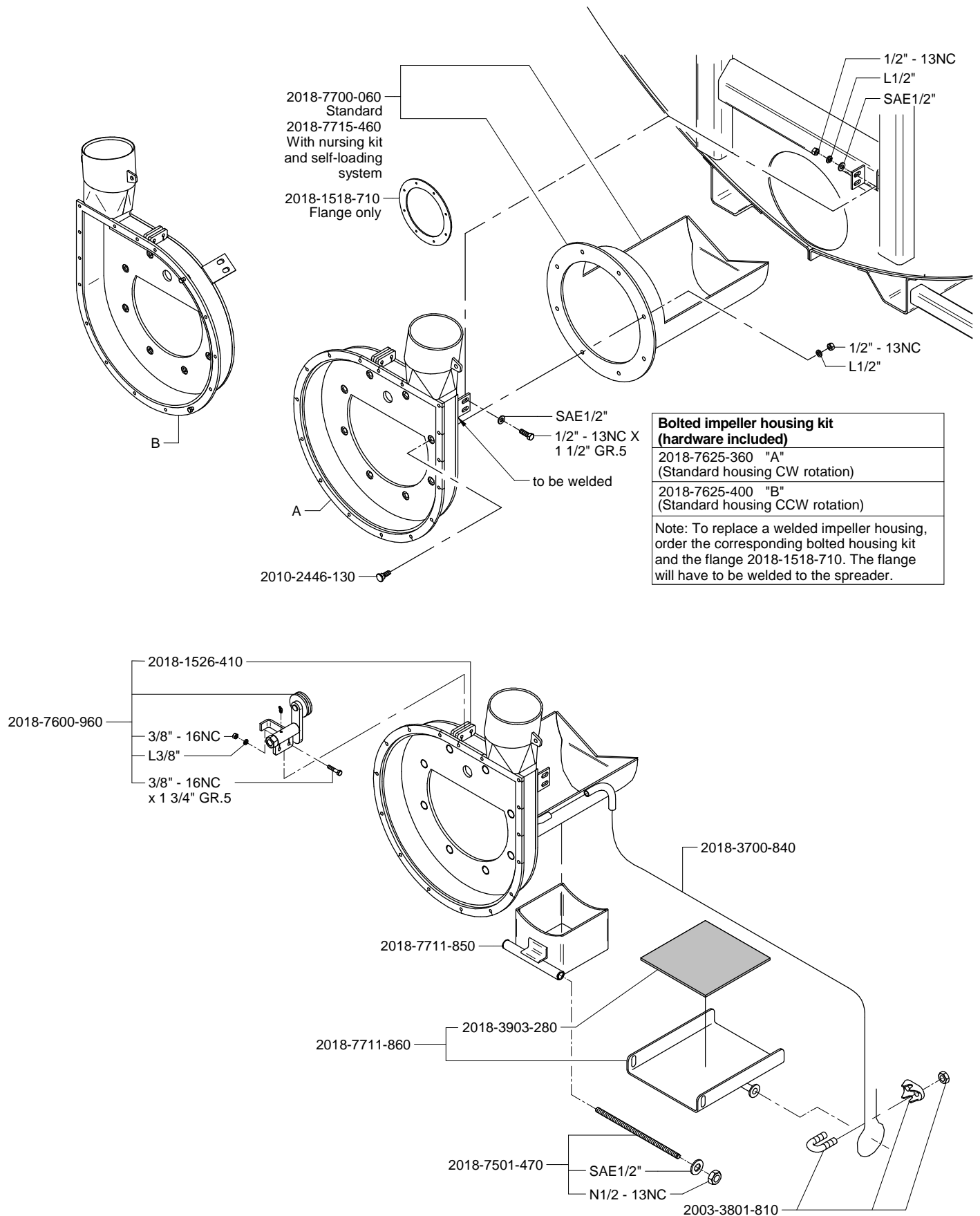
Support and jack..... 12

Mud flaps and kit of spring loaded bracket..... 13

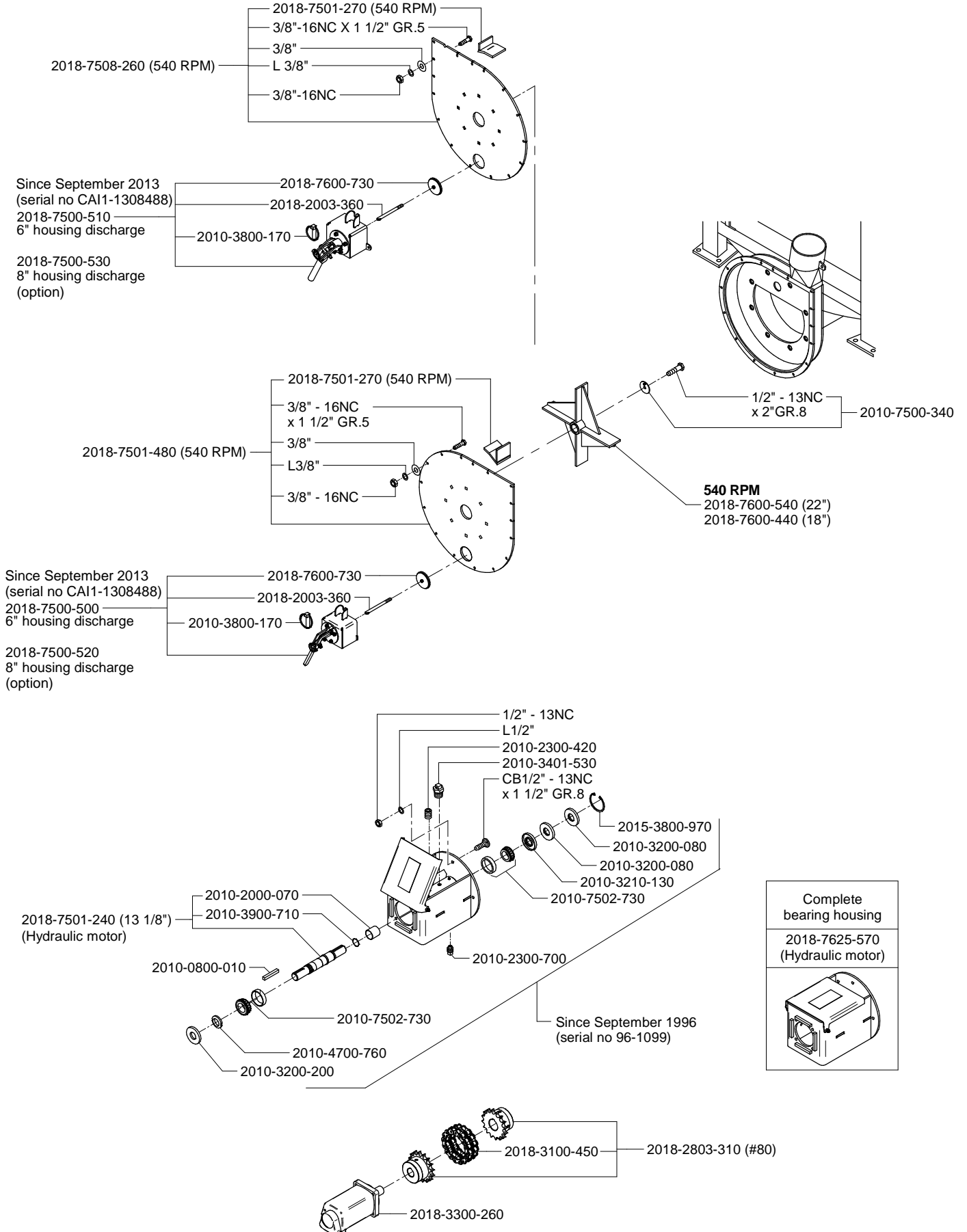
Electronic fill indicator..... 14

Hardware Identification	
Type	Designation
Hexagonal bolt	-
Carriage bolt	CB
Square head bolt	SB
Socket head cap screw	SCS
Socket head set screw	SSS
Flat head cap screw	FCS
Hexagon nut	-
Hexagon nylon lock nut	N
Hexagon oval lock nut	OVL
Hexagon tri-lock nut	TRI
Castle nut	CSL
Flange nut	FLN
Wing nut	WNG
Flat washer	-
Lock washer	L
SAE washer	SAE
Large ext. dia. washer	LD
Small ext. dia. washer	SD
Stainless steel bolts parts	SS

IMPELLER HOUSING, INTAKE AND DRAIN UNDER HOUSING

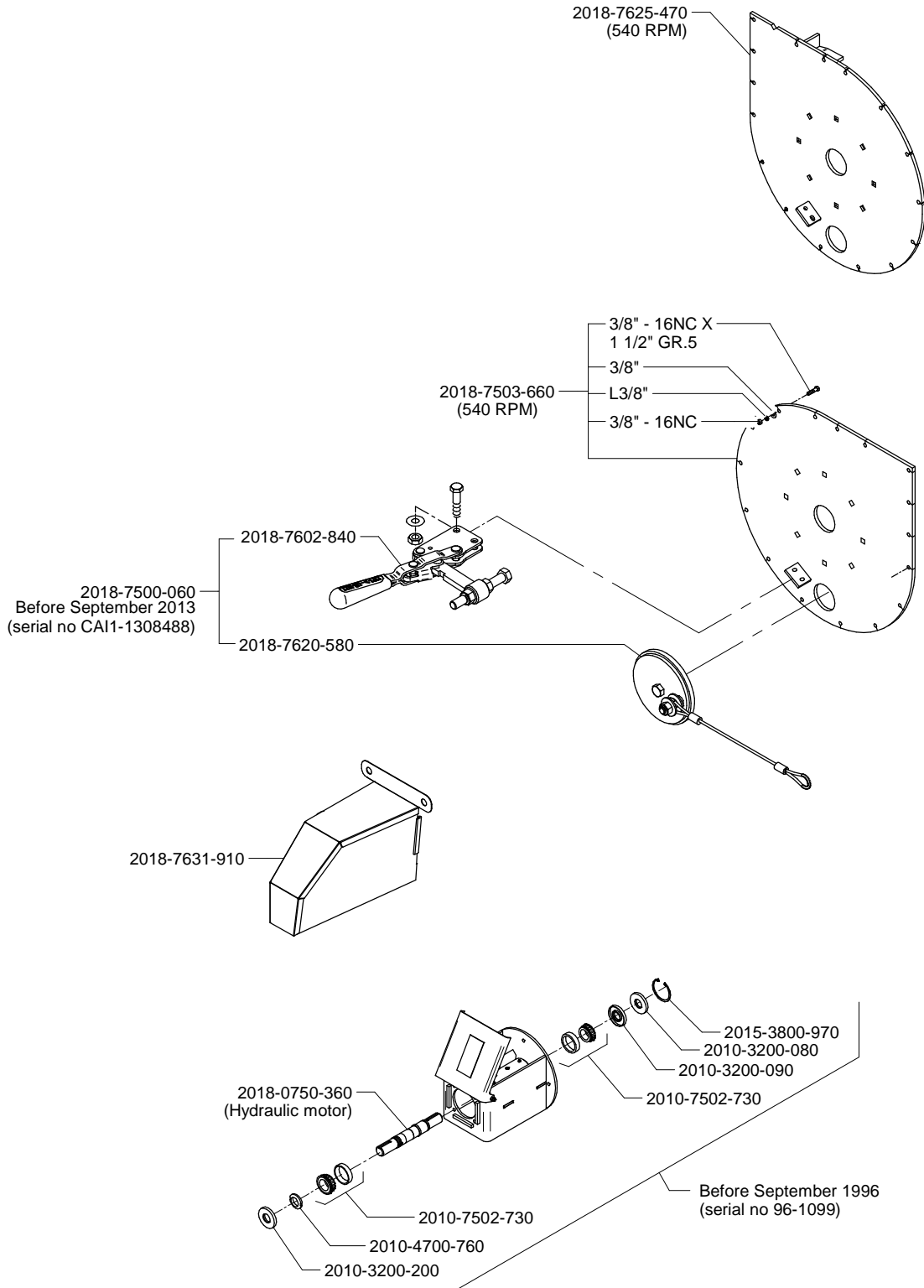


BEARING HOUSING, IMPELLER, AND HOUSING COVER PLATE

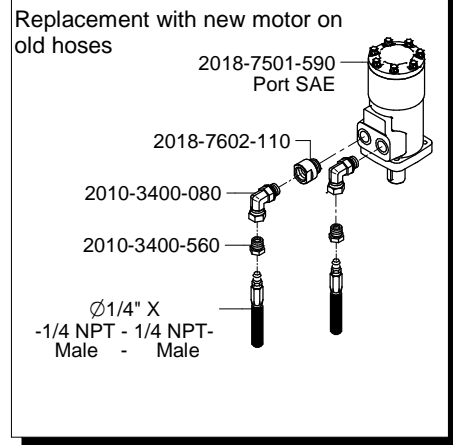
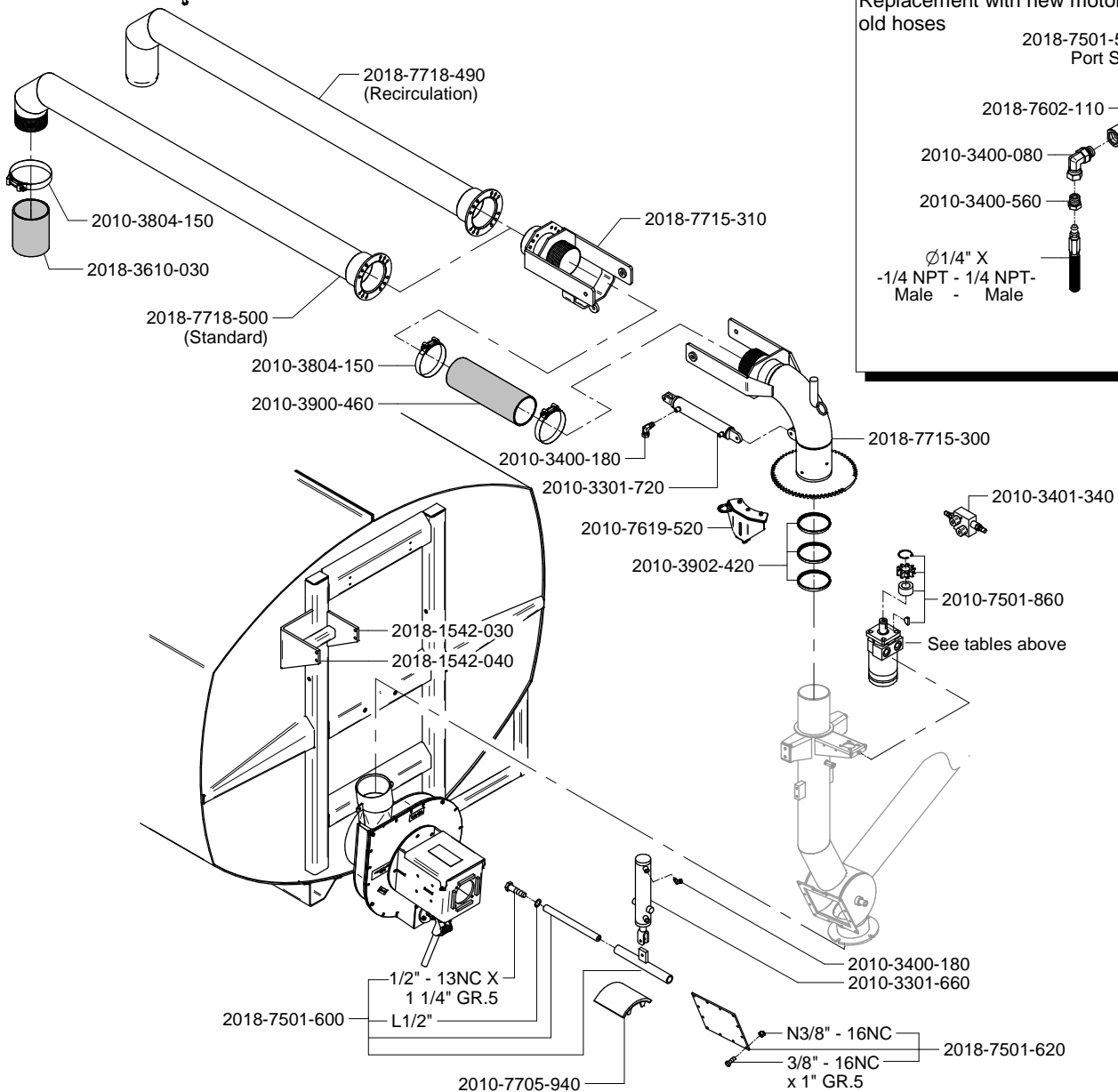
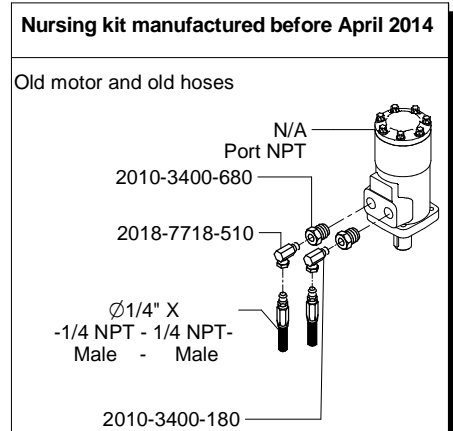
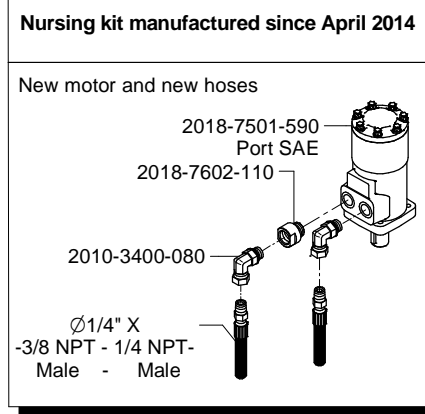
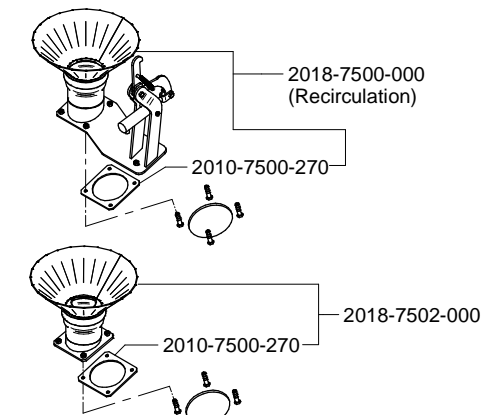


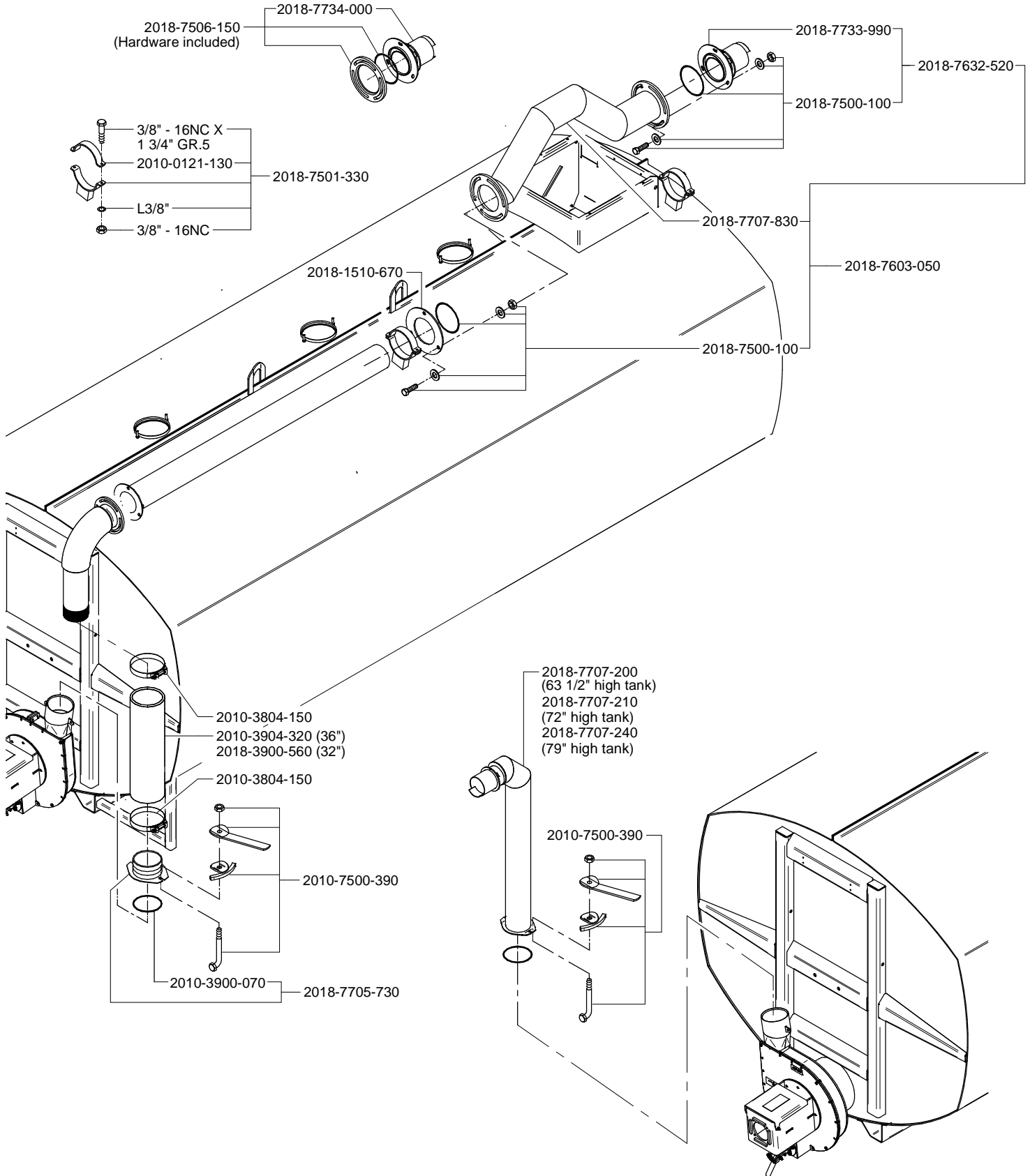
LIQUID MANURE SPREADER - ELC

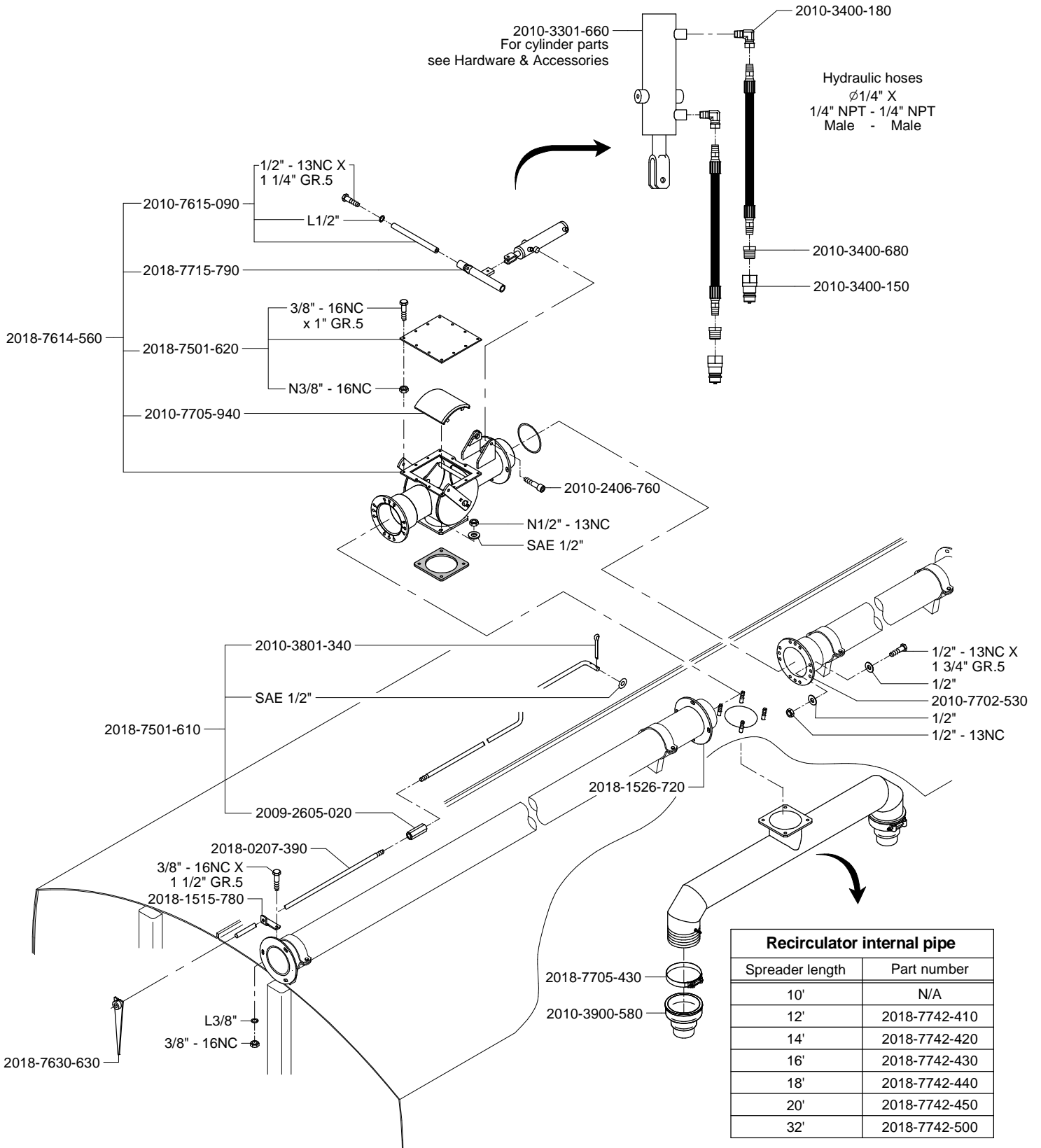
BEARING HOUSING, PLUG AND HOUSING COVER PLATE - OLD MODEL

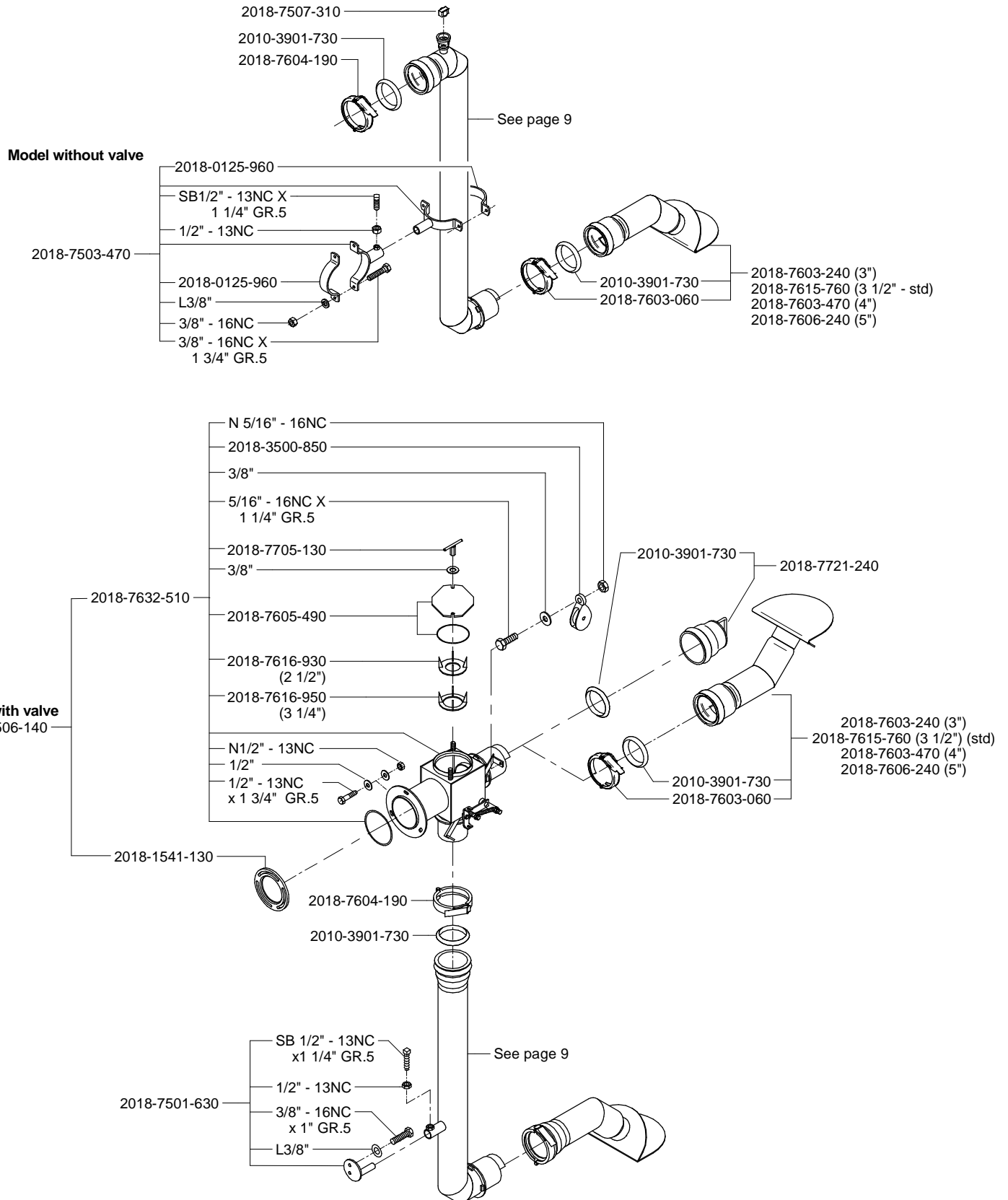


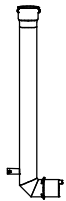
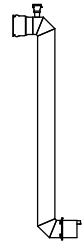
Note: For hydraulic cylinder or motor seal kit replacement, refer to Hardware & Accessories.

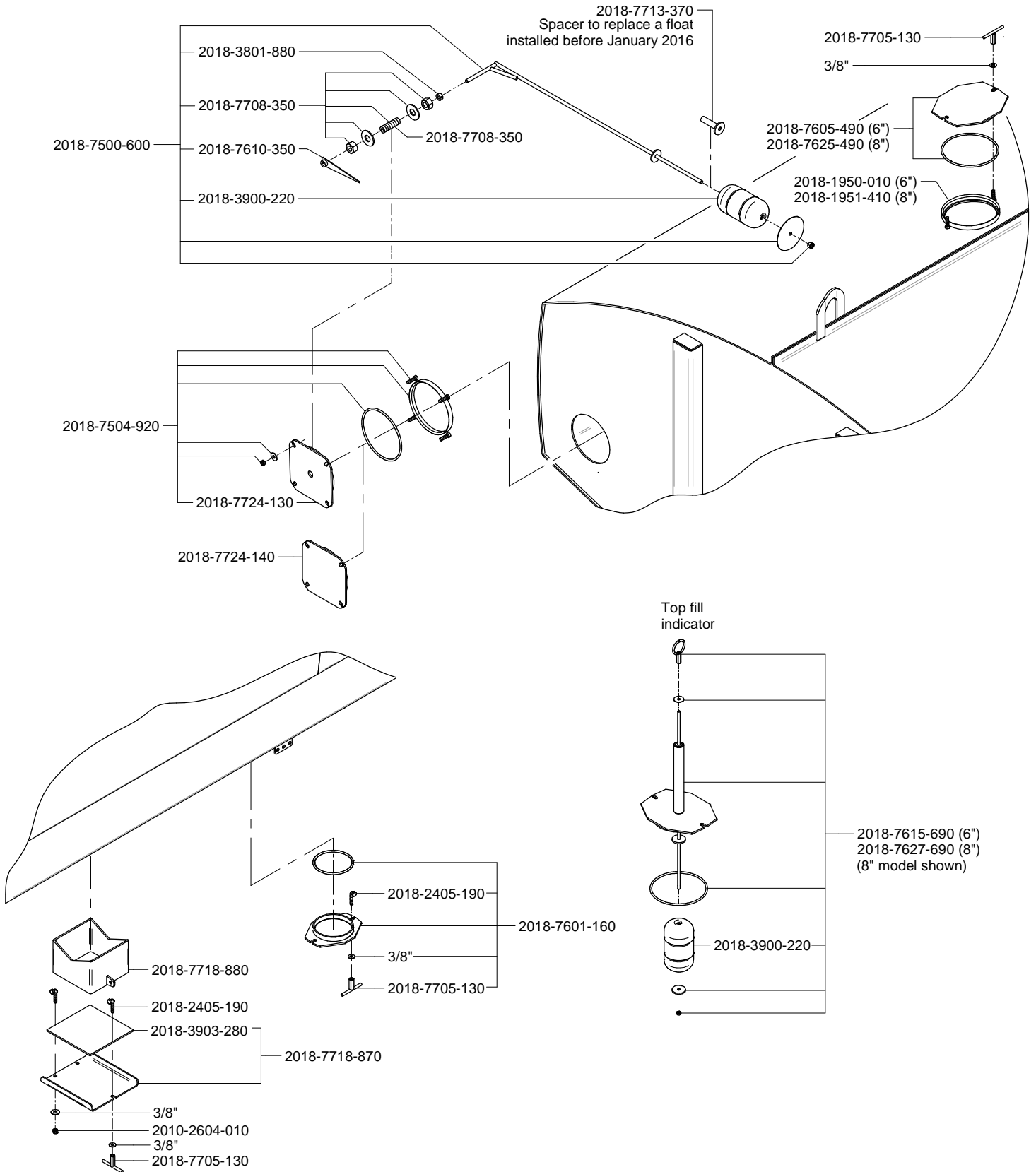


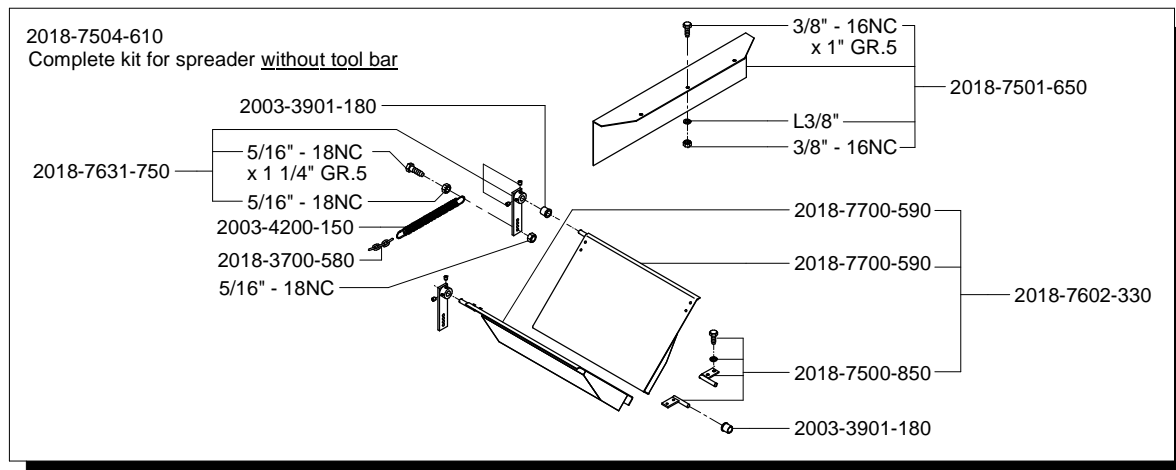
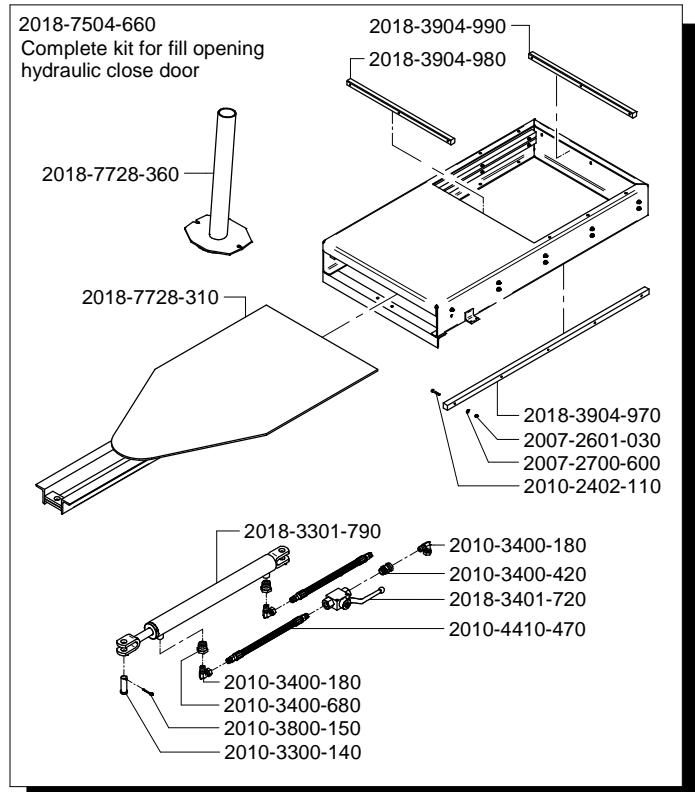
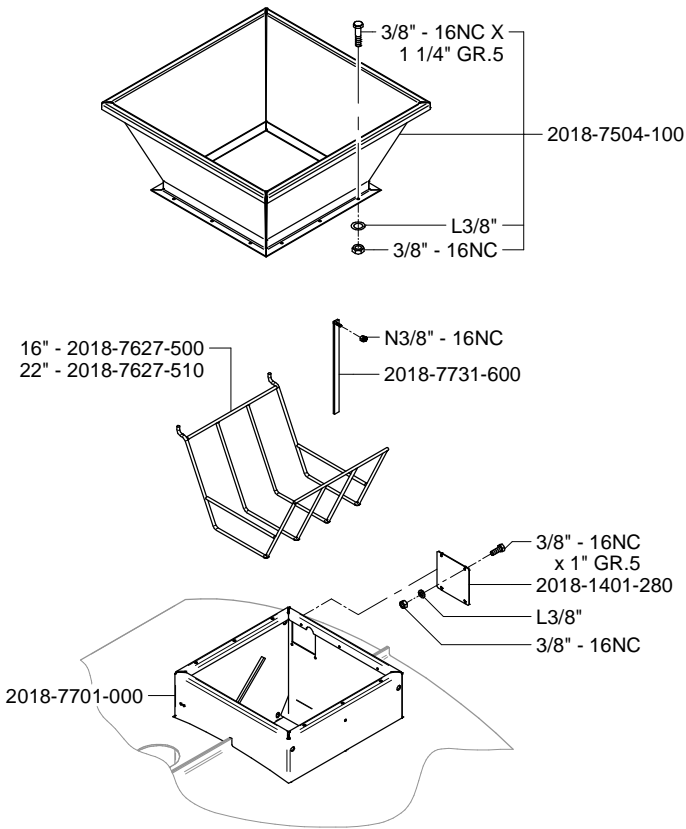


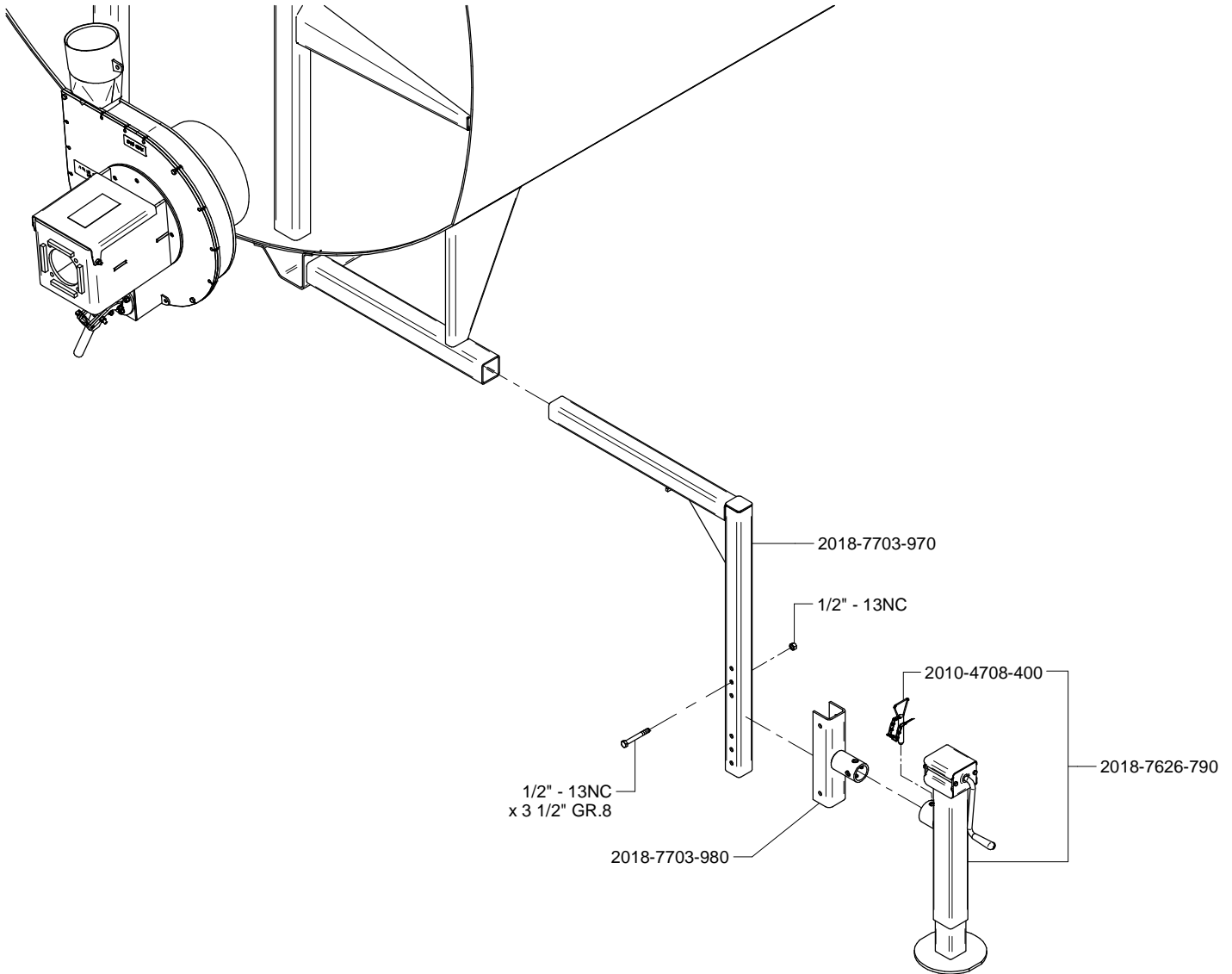


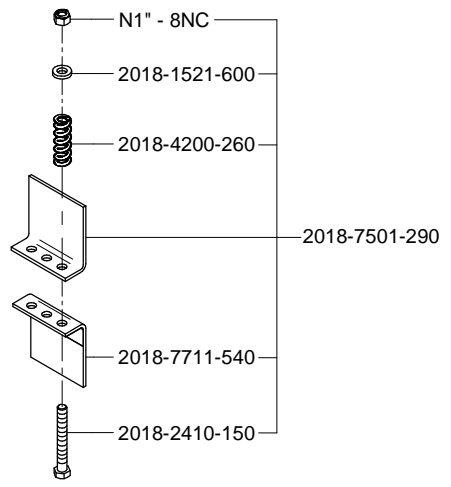
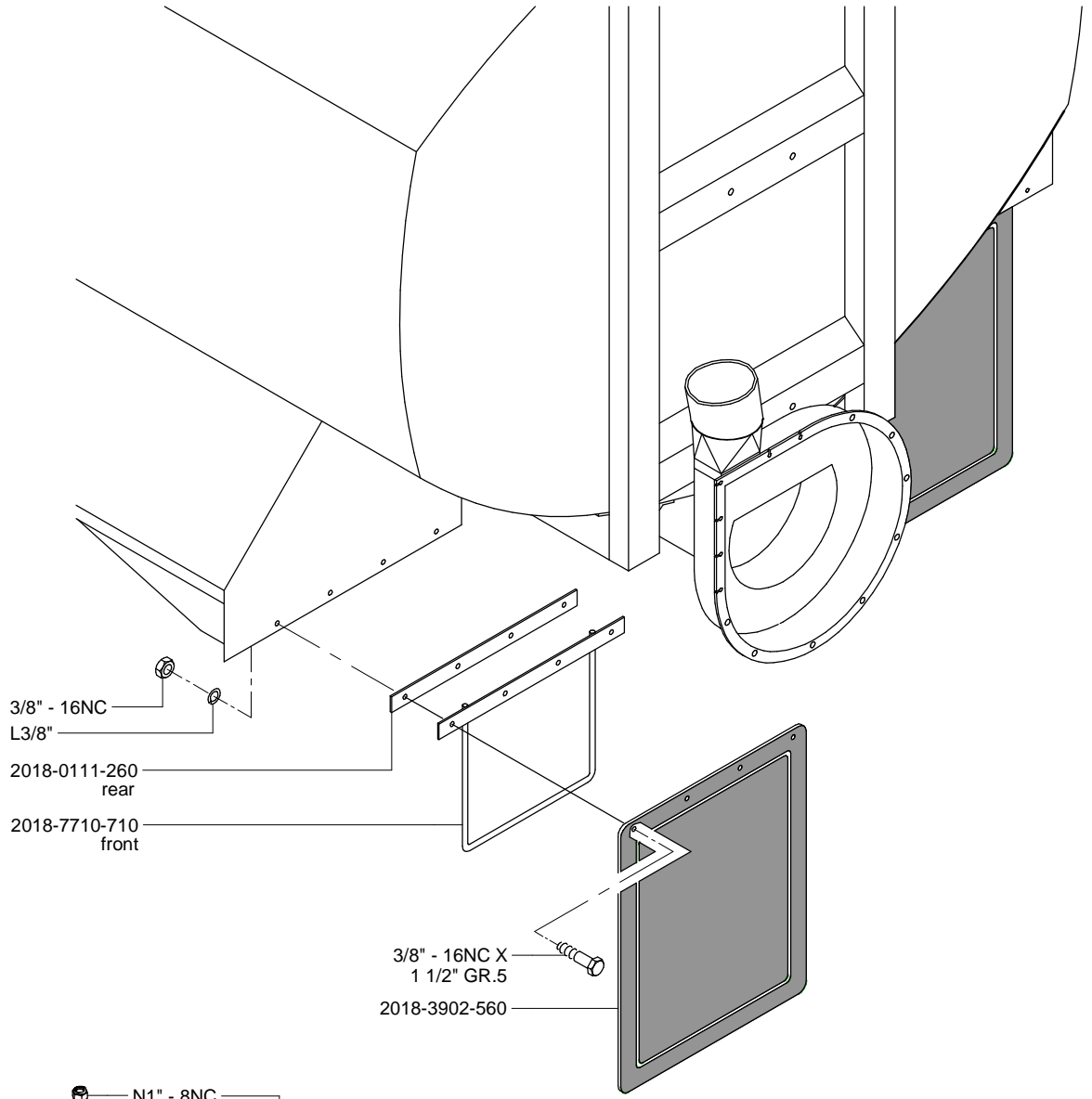


Spreader model	Gallon (UK)	Gallon (US)	With valve	Without valve
				
ELC-1900	1900	2250	2018-7601-380	2018-7601-080
ELC-2250	2250	2700		
ELC-2650	2650	3150		
ELC-3000	3000	3600		
ELC-3350	3350	4000		
ELC-3750	3750	4500		
ELC-6000	6000	7200		
ELC-2250	2250	2700	2018-7601-050	2018-7601-090
ELC-2650	2650	3200		
ELC-3100	3100	3700		
ELC-3550	3550	4250		
ELC-4000	4000	4800		
ELC-4450	4450	5350		
ELC-7100	7100	8520	2018-7601-060	2018-7601-110
ELC-2500	2500	3000		
ELC-3000	3000	3600		
ELC-3500	3500	4200		
ELC-4000	4000	4800		
ELC-4500	4500	5400		
ELC-5000	5000	6000		
ELC-8000	8000	9600		









#	LID	PIPE
2018-7502-880	8"	8"
2018-7502-980	8"	6"
2018-7502-190	6"	8"
2018-7502-200	6"	6"

