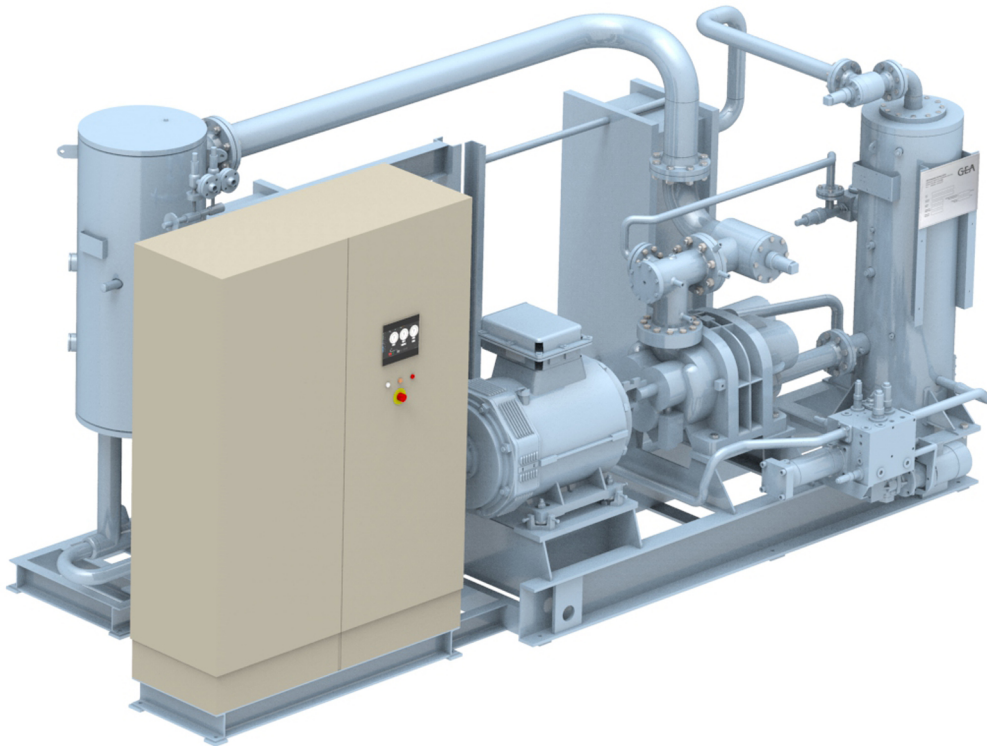


PRODUCT INFORMATION

Original document



GEA Grasso FX P

Chiller

COPYRIGHT

All Rights reserved.

No part of this documentation may be copied or published by means of printing, photocopying, microfilm or otherwise without prior written consent of

- GEA Refrigeration Germany GmbH

herein after referred to as the **manufacturer**. This restriction also applies to the drawings and diagrams contained in the documentation.

LEGAL NOTICE

This product information is to be used for product presentations and customer consultation. It contains important information and technical data regarding the product.

The product information makes the technical, product related and commercial information available to the customer in detail before the sale of the product.

This product information serves as a support and technical advisory service for our partners and customers as well as for the marketing team. Apart from serving as the medium for transfer of product know-how, it also forms the basis for product demonstrations, the organisation and conduction of technical seminars as well as the technical support at trade fairs.

This product information should be supplemented with the information about the industrial safety and health related regulations at the site of installation of the product. The regulations vary from place to place as a result of the statutory regulations applicable at the site of installation of the product and are therefore have not been considered in this product information.

In addition to this product information and the accident prevention regulations applicable for the respective country and area where the product is used, the accepted technical regulations for safe and professional work must also be observed.

GEA Refrigeration Germany GmbH reserves the right to make technical changes during the course of further development of the equipment covered by this product information.

Illustrations and drawings in this product information are simplified representations. As a result of the improvements and changes, it is possible that the illustrations do not exactly match the current development status. The technical data and dimensions are subject to change. No claims can be made on the basis of them.

SYMBOLS USED



Danger

Stands for an immediate danger leading to severe physical injuries or death.

► Description for avoiding the danger.



Warning

Stands for a potentially dangerous situation leading to severe physical injuries or death.

► Description for avoiding the dangerous situation.



Caution

Stands for a potentially dangerous situation which could lead to minor physical injuries or damage to property.

► Description for avoiding the dangerous situation.

Notice

Stands for important information that must be observed for the intended use and function of the product.

► Description of the required action for the intended function of the product.

PREFACE

In addition to other products, the portfolio of GEA Refrigeration Germany GmbH includes complete chillers and heat pumps.

In light of the fact that the working principle is identical, GEA documentation differentiates between the terms chillers and heat pumps as follows:

A chiller is a system where the application focus lies on generating refrigeration (cooling a liquid secondary circuit), regardless of possible heat recovery options via a liquid-cooled condenser and/or oil cooler. The GEA chillers include the standard GEA Blu series BluAstrum, BluGenium, BluAir (duo), BluX (duo) as well as the modular GEA Grasso FX series and the MX as a special series.

A heat pump is a system where the application focus lies on generating heat (heating a liquid heated medium). Here, the heat exchanger concept on the high pressure side is optimised with respect to this application. GEA heat pumps include the standard GEA Red series RedAstrum, RedGenium and the special series GEA Grasso HX.

The GEA Blu-Red Fusion product can be seen as a two-stage heat pump or also as a combined chiller-heat pump. Since the product is always (also) designed for a specific heating application, it is formally part of the GEA Red Standard series.

Many components and modes are used in the same way in different GEA chiller and heat pump product series. The descriptions of some components and operating principles are thus expressed in general terms in this document.

The figure on the front page shows the product in a project-specific version (project-related modifications possible).

LAYOUT INFORMATION

Bullet points and numbered list characters

Bullet points are used to separate logical contents within a section:

- Bullet point 1
 - Types of bullet point 1.
- Bullet point 2
 - Types of bullet point 2.

Numbered list characters are used to separate enumerations within a descriptive text:

Descriptive text with consecutive numbering:

- Numbered list point 1
- Numbered list point 2

Handling instructions

Handling instructions prompt you to do something. Several steps in sequence time form a handling sequence that should be completed in the prescribed order. The handling sequence can be divided into individual steps.

Handling sequence

1. Handling sequence step 1
 - step 1,
 - step 2,
 - step 3.

2. Handling sequence step 2

The subsequent handling sequence is the expected result:

→ Result of the handling sequence.

Individual handling steps

Individual handling steps are marked thus:

- Individual work steps

TABLE OF CONTENTS

1	Description	11
1.1	General information	11
1.2	Scope of delivery	12
1.3	Product designation chillers and heat pumps with screw compressors	14
2	Components	17
2.1	Chillers in remote design	18
3	Description of Design and Function	19
3.1	Design, applications	19
3.2	General operating sequence of chillers and heat pumps	21
3.3	Main components	22
3.3.1	Screw compressor	23
3.3.2	Compressor drive motor	24
3.3.3	Coupling	24
3.3.4	Evaporator and liquid separator	24
3.3.5	Condenser with expansion valve	26
3.3.6	Oil separator	26
3.3.7	Oil cooler	26
3.3.8	Oil filter system with OMC-block (oil management centre) screw compressor	27
3.3.9	Oil pump	27
3.3.10	Suction filter combination (screw compressor)	28
3.3.11	Control cabinet with control	28
3.3.12	Fittings	29
3.3.13	Safety devices	29
3.3.14	Safety devices for pressure limitation	30
3.3.15	Components installed by the client	31
4	GEA Omni control	32
4.1	Product highlights	32
4.2	View	33
4.3	Standard function	33
4.4	Components of GEA Omni	34
4.5	Input and Output Signals	36
5	Technical data	39
5.1	Dimensions, weights, fill quantities and connections	39
5.1.1	GEA Grasso FX PP 200 ... series GEA Grasso FX PP 350	39
5.1.2	GEA Grasso FX PP 450 ... series GEA Grasso FX PP 900	41
5.1.3	GEA Grasso FX PP 800 ... series GEA Grasso FX PP 2800	43
5.1.4	GEA Grasso FX PP 3300 ... series GEA Grasso FX PP 8000	45
5.1.5	GEA Grasso FX LP, VP 200 ... size GEA Grasso FX LP, VP 350	47
5.1.6	GEA Grasso FX LP, VP 450 ... size GEA Grasso FX LP, VP 900	49
5.1.7	GEA Grasso FX LP, VP 800 ... size GEA Grasso FX LP, VP 2800	51
5.1.8	GEA Grasso FX LP, VP 3300 ... size GEA Grasso FX LP, VP 8000	53
5.2	Application limits	54
5.3	Water quality requirements, parameters	56
5.4	Performance characteristics	58
5.5	Sound pressure level	58
5.6	Information on noise emissions	60
6	Application form	67
6.1	Manufacturer address	67

TABLE OF FIGURES

Fig. 1	GEA Grasso FX P, front view	11
Fig. 2	Standard Chiller GEA Grasso FX P, main components	22
Fig. 3	Design of the suction line	25
Fig. 4	GEA Omni exterior view without indicator lights	33
Fig. 5	GEA Omni exterior view with indicator lights	33
Fig. 6	GEA Omni control cabinet interior view (frequency converter installed in control cabinet)	35
Fig. 7	GEA Grasso FX PP 200 ... GEA Grasso FX PP 350	39
Fig. 8	GEA Grasso FX PP 450 ... GEA Grasso FX PP 900	41
Fig. 9	GEA Grasso FX PP 800 ... GEA Grasso FX PP 2800	43
Fig. 10	GEA Grasso FX PP 3300 ... GEA Grasso FX PP 8000	45
Fig. 11	GEA Grasso FX LP, VP 200 ... GEA Grasso FX LP, VP 350	47
Fig. 12	GEA Grasso FX LP, VP 450 ... GEA Grasso FX LP, VP 900	49
Fig. 13	GEA Grasso FX LP, VP 800 ... GEA Grasso FX LP, VP 2800	51
Fig. 14	GEA Grasso FX LP, VP 3300 ... GEA Grasso FX LP, VP 8000	53
Fig. 15	Corrosion resistance in presence of chlorides	57

1 Description

1.1 General information

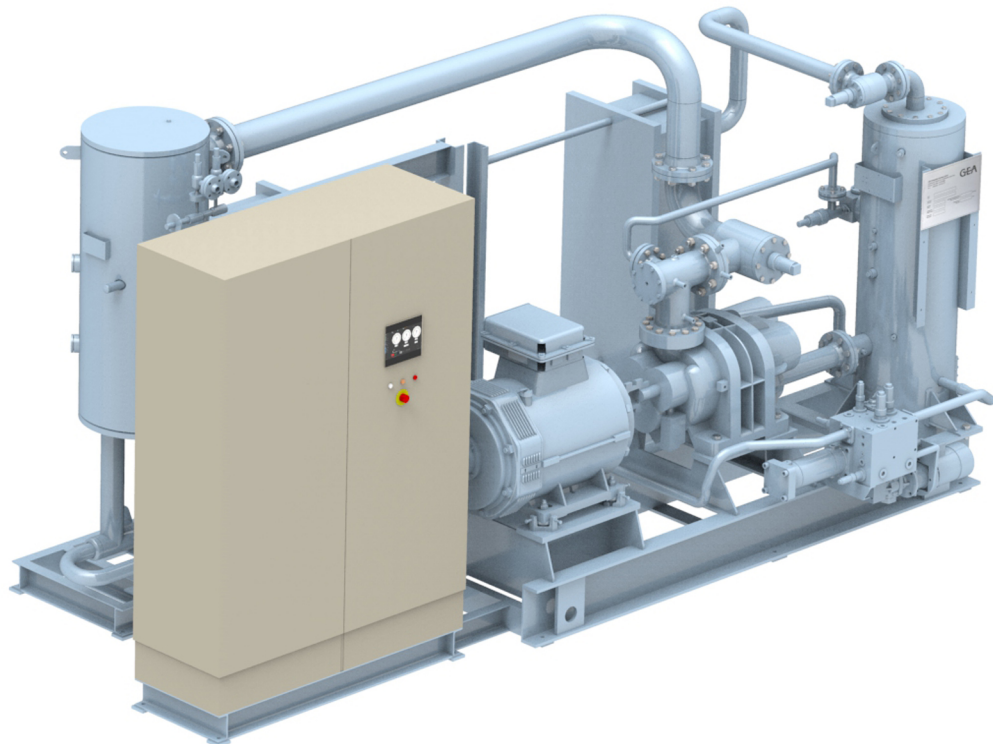


Fig. 1: GEA Grasso FX P, front view


Parameter	Remark
Output range	200 - 8000 kW 12 / 6 °C (secondary refrigerant temperature) 27 / 32 °C (temperature of the refrigerant)
Screw compressor	GEA Grasso M series, frame size C, D, E, G, H, L, M, N GEA Grasso LT series, frame size P, R, S, T, V, W, Y, Z, XA, XB, XC, XD, XE, XF $V_{th} = 231 \dots 8560 \text{ m}^3/\text{h}$
Screw Compressor Package	GEA Grasso M series, GEA Grasso SP1 series,
Chiller	GEA Grasso FX P
Design Evaporator	Plate heat exchanger, cassette welding Plate heat exchanger, completely welded
Working principle	flooded evaporation
Liquid separator	Performance-independent horizontal or vertical
Design Condenser	Plate heat exchanger, cassette welding Shell and plate condenser, completely welded Tubular condenser on request
Design type Condenser (R)	air cooled condenser or evaporative condenser (not included in scope of delivery)
Transport	Compressor GEA Grasso M series - 1 part Compressor GEA Grasso LT series - in several parts or modules

1.2 Scope of delivery

Notice

The product is manufactured and delivered according to technical specifications.

► Optional design variants based on the standard equipment can be considered.

Standard equipment	
Designation	Design
Maximum permissible pressure:	Max. 28 bar
Intended environment:	Indoor installation
Ambient temperatures:	+5 °C to +40 °C
Installation altitude:	≤ 1000 m above sea level
Electric motor:	Standard scope of delivery
Refrigerant:	R717
Type of oil:	<p>According to order specification. Compare also the technical information on the lubricating oils for GEA packages, chillers and heat pumps.</p> <div>  Caution </div> <p>Deviating types of oil must be agreed with the manufacturer. ► Contact the Design or Technical Customer Service of GEA Refrigeration Germany GmbH.</p>
Oil cooling:	cooled with water or refrigerant
Oil heater:	Standard scope of delivery
Oil filter:	Single stage filter
Spare oil filter:	none
Oil level switch:	none
Pressure sensors:	directly in the pipe
separate push-button switch:	none
Overflow valve HP/LP:	Standard scope of delivery
Safety valve LP:	Double safety valve with change-over valve
Flow monitor:	electronic
Control:	GEA Omni
Communication:	Modbus TCP
Power panel	Standard scope of delivery, cable entry from below
Colour:	RAL 5014 (dove grey)
Vibration isolators:	none
Approval of pressure equipment:	CE-PED, Module H (piping)
Documentation:	2x paper form + 1 USB stick

Optional equipment	
Designation	Design
Spare oil filter:	available
Communication:	Profibus DP ProfiNet
frequency inverter:	can be delivered

Optional equipment	
Designation	Design
Electric motor:	customer specific design possible on request
Flow monitor:	mechanically (paddle)
Vibration isolators:	available
Approval of pressure equipment:	CE-PED, Module H1 (complete chiller)

Description

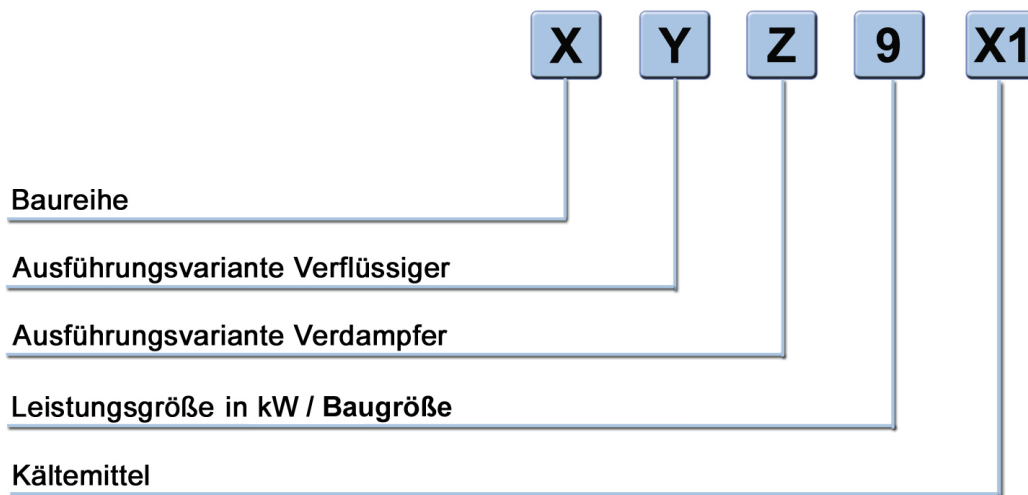
Product designation chillers and heat pumps with screw compressors

1.3 Product designation chillers and heat pumps with screw compressors

GEA Grasso FX, MX and HX series single stage with screw compressors

GEA Grasso M,

GEA Grasso LT, GEA Grasso L XHP and GEA CompaX



Product code description

Code	Description
X	Chiller / heat pump series
Y	Condenser version
Z	Evaporator version
9	Chiller / heat pump capacity
X1	Refrigerant

X series

Code	Description
FX	Chiller with flooded evaporator
MX	Chiller special design with flooded evaporator
HX	Heat pump special design ¹ with flooded evaporator

Y Condenser version

Code	Description
P	Plate heat exchanger (cassette welding)
S	Shell and plate condenser (completely welded)
R	Tube bundle condenser
L	Air cooled condenser ²
V	Evaporating condenser ²
O	without condenser ("remote")
X	other version

¹ NH₃, with screw compressor in 52 / 63 / 70 bar design.

² As standard, air-cooled condensers are not included in the delivery scope of GEA Refrigeration Germany (however, depending on the application, an air-cooled condenser can be selected as part of the GEA delivery scope).

Z Evaporator version

Code	Description
P	Plate heat exchanger (cassette welding)
S	Plate heat exchanger (completely welded)
O	Without evaporator (condenser unit)
X	other version

9 Capacity / compressor frame size ³

Compressor frame size ⁴	Capacity in kW / frame size		Compressor frame size ⁴	Capacity in kW / frame size
C	200		T	1500
D	250		V	1700
E	300		W	2000
CompaX 350	035		WH	H200
G	350		Y	2400
CompaX 400	040		YH	H240
H	450		Z	2800
L	550		ZH	H280
M	650		XA	3300
CompaX 700	070		XB	4200
N	900		XC	5000
CompaX 900	090		XD	5800
P	800		XE	7000
R	1100		XF	8000
S	1300			

X1 refrigerant

Code	Description
NH ₃	Ammonia ⁵

³ Relating to cold water operation +12 / +6 °C at 2940 min⁻¹, the compressor designation of heat pumps based on the new compressor series L XHP is the frame size.

⁴ Housing size (frame sizes XG / XH not permissible for chillers and heat pumps).

⁵ Other refrigerants on request.

Examples of designation

Example	Description
FX PP 650 NH₃	Chiller with screw compressor (FX), plate heat exchanger as condenser (P), plate heat exchanger (cassette welding) as evaporator (P), compressor frame size M / capacity 650 kW (650), for refrigerant ammonia(NH₃)
HX SS 1700 NH₃	Heat pump with screw compressor (HX), shell and plate condenser (S), plate heat exchanger (completely welded) as evaporator (S), compressor frame size V / capacity 1700 kW (1700), for refrigerant ammonia (NH₃)
HX SP H280 NH₃	Heat pump with screw compressor (HX), shell and plate condenser (S), plate heat exchanger (cassette welding) as evaporator (P), Compressor series L XHP, frame size H2800 (H280), for refrigerant ammonia (NH₃)

2 Components

The chillers comprise the following components:

- 1 screw compressor with series FX P,
- 2 screw compressors with series FX Pduo,
- Evaporator,
- Condenser,
- 1 electric motor with coupling and flange with series FX P,
- 2 electric motors with coupling and flange series FX Pduo,
- Oil separator,
- Oil cooler,
- Oil filter,
- Oil pump
- Suction filter,
- Liquid separator,
- Expansion device,
- Oil return system,
- Low-voltage supply with control unit,

All of the standard fluids in refrigeration technology may be used along with water as a cooling agent or cooling medium.

By default, the evaporator has a modular welded or fully welded plate heat exchanger. In the case of the chiller version as a heat pump, for example, solutions without evaporator are possible.

Various versions of the condenser are available.

Approval

The chillers are awarded a CE label in accordance with the Pressure Equipment Directive 2014/68/EC after approval.

Documentation

Every chiller includes user documentation. The user documentation contains:

- Drawings and part lists,
- Safety Instructions,
- Operating manual
(with the description of the refrigerant and oil circuits, the instructions for installation, start-up and maintenance),
- Documentation of the main components (electrical motor, control),
- Maintenance manual,
- Acceptance certificate for components requiring acceptance

2.1 Chillers in remote design

In addition to the chillers completely equipped ex works with a condenser, so called remote chillers are often also operated.

This means that the chiller delivered ex works does not contain a condenser but has only been designed for the requested condensation temperature.

The customer himself then selects a suitable condenser and connects this with the supplied remote chiller. The external (remote) condenser is either an air cooled condenser or an evaporative condenser.

3 Description of Design and Function

3.1 Design, applications

The **GEA Grasso FX P** Chiller Programme provides proven components as complete refrigeration systems for medium and large refrigeration and/or air conditioning requirements.

Main fields of application:

- cold water for air conditioning
- cold brine for air conditioning with combined ice storage operation
- cold water for industrial processes
- cold brine for industrial processes
- (cold) and warm water for heat pump operation

In principle, these refrigeration systems use ammonia as refrigerant which is characterized by a high refrigerating capacity, low energy consumption and a favourable price and are completely neutral towards the environment.

Equipped with the screw compressor series, the **GEA Grasso FX P** chillers cover the refrigeration range of 200 kW to 8000 kW for cold water.

The output ranges are defined by 22 frame sizes of the screw compressor.

The **GEA Grasso FX P** chillers work with flooded evaporator systems and can be fitted with a variety of condenser types.

The chillers have a modular design and comprise the following main modules:

- Standard screw compressor package
 - GEA Grasso M
 - or
 - GEA Grasso SP1
- Heat exchanger module with low pressure separator and de-oiling system
- Low-voltage supply with control unit

The modular construction of the chillers is modelled on the construction of the screw compressor packages. The arrangement of the components ensures the compact design of the chillers.

Solely plate-type evaporators are used as evaporators.

On the condenser side, the following versions are used:

- Plate type heat exchanger PP
- Evaporative condenser VP
- Air-cooled condenser LP

The GEA Grasso M chiller series with screw compressor package are supplied, as a standard, ready for connection, fully piped and wired.

The modular design enables a divided delivery and assembly of the chiller with the screw compressor packages of the GEA Grasso SP1 series in different parts.

The modules will be re-assembled on site under consideration of certain special machine room conditions.

The heat exchangers are designed according to the parameters of a project, taking into account a maximum energy efficiency on the evaporator and the condenser side.

Notice

The use of several GEA Grasso FX P with only one common condenser is not permitted.

► When operating with an external condenser (VP, LP), a separate condenser must be available for each chiller!

The standard version of the chillers is equipped with a freely programmable control.

All operating and fault signals as well as the process variables can be read from a display.

The control device is operated via a Touch Panel.

The chillers are delivered without refrigerant and refrigerating machine oil. They are filled with dry nitrogen (0.5 bar overpressure).

After consultation with the customer, a refrigerator oil filling is possible after the factory acceptance test (FAT).

Each chiller is supplied with user documentation containing a description of the refrigeration cycle, commissioning instructions, an operating manual and the maintenance manual.

The separate installation and maintenance manual are provided for detailed information about the screw compressors.

3.2 General operating sequence of chillers and heat pumps

Chillers and heat pumps are automatic plants used in circuit processes in which a refrigerant absorbs low-temperature heat (source) and discharges it at a high temperature (sink).

The screw compressor draws refrigerant gas from the liquid separator and compresses it to condensation pressure.

The refrigerant liquefies as it is cooled and discharges its heat to a cooling medium or heat carrier. Before or after condensation, the overheating or undercooling heat can be removed from the refrigerant in an external desuperheater or subcooler. Then the liquid refrigerant is relaxed in the liquid separator.

In the liquid separator, the refrigerant vapour and liquid are separated.

The liquid is led through the evaporator by gravity circulation (thermosiphon principle). As result of liquid refrigerant absorbing heat (flooded evaporation) the refrigerant evaporates and the cooling agent is cooled down. In a cascade variant, an evaporator can be used, which can also be charged with compressed refrigerant from the low-pressure stage instead of a refrigerant. The refrigerant from the process stage process is liquefied in the process.

During the operation of the screw compressor, oil is injected into the working chamber and then separated again from the refrigerant in the discharge side oil separator.

The oil that has heated up in the compressor is cooled in an oil cooler to the inlet temperature.

Despite the oil separation system, oil will reach the low pressure side of the circuit.

A special automatic and maintenance-free oil returning system developed by GEA Refrigeration Germany GmbH returns the oil from the evaporator / liquid separator back to the screw compressor.

This is a basic precondition for fault-free operation of the evaporator system.

The capacity control of the screw compressor is continuously adjusted via the compressor's control slide (optional for the GEA BluAstrum and GEA BluAir product series) and through the frequency converter control of the compressor drive motor (standard equipment in the "Blu" and "Red" product families). In this way, the cooling capacity can be adapted to the effectively required cooling capacity in the maximum range 0% to 100% (the minimum level is > 0 % depending on the application area).

The adjustment of the internal compression ratio to the current operating conditions is done steplessly by the compressor's Vi-slider. The Vi capacity slide is hydraulically adjusted and activated using 2 solenoid valves. The position of the Vi control slide is displayed on the compressor control.

In partial-load mode, the cold water / saltwater and heating agent flows may be reduced by max. 50% to guarantee efficient transfer of the heat to the heat exchanger systems.

3.3 Main components

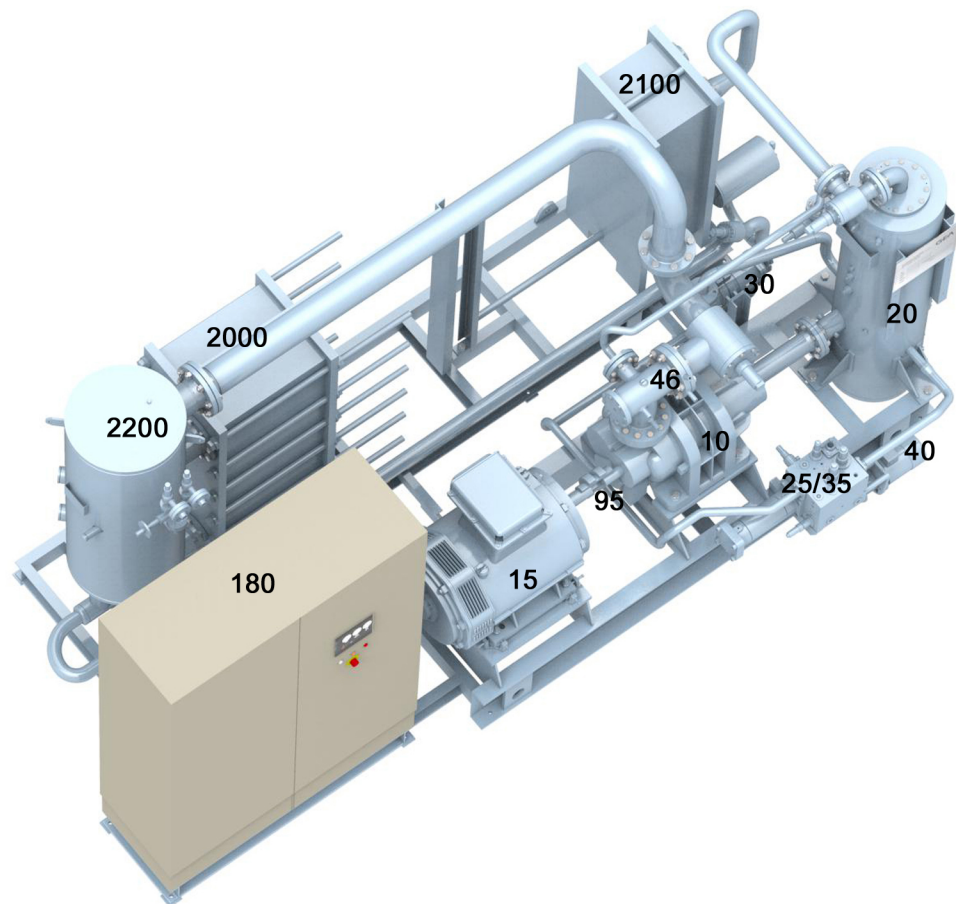


Fig.2: Standard Chiller GEA Grasso FX P, main components

The chiller packages of the GEA Grasso FX P series are made up of the following main assemblies and components (standard scope of delivery, project-related deviations and optional equipment are possible):		
Position	Main assembly, component	Information
10	Screw compressor	see installation and maintenance instructions for screw compressor
15	Compressor drive motor	See operating manual of the compressor drive motor
20	Oil separator	See component documentation
25/ 35	OMC block, oil filter	See component documentation
30 (200)	water cooled oil cooler (refrigerant cooled oil cooler)	See component documentation
40	Oil pump with frequency converter (for chillers with compressors from the LT series). ⁶	See component documentation
45	Suction filter ⁷	See component documentation see installation and maintenance instructions for screw compressor
55	Check valve - suction side ^{8,7}	
60	Check valve - pressure side ⁹	

⁶ For compressors from the M series, an oil pump is only used in specific applications.

⁷ For chillers with compressors from the M series, the component is integrated into the compressor. For chillers with compressors from the LT series, the component is used externally.

⁸ not on the drawings

⁹ component of the oil separator.

The chiller packages of the GEA Grasso FX P series are made up of the following main assemblies and components (standard scope of delivery, project-related deviations and optional equipment are possible):		
Position	Main assembly, component	Information
95	coupling in coupling housing ¹⁰	see installation and maintenance instructions for screw compressor
175	Stop valve - compressor pressure side ⁸	
180	Control/ switching cabinet	See control documentation
260	Stop valve - pressure side ⁸	
280	Stop valve - suction side ⁸	
500	Solenoid valve - oil supply ⁸	See component documentation
2000	Evaporator	See operating manual of the evaporator
2100	Condenser	See operating manual of the condenser
2200	Liquid separator	
2250 (2860)	High pressure float valve ⁸ (electronic expansion valve) ⁸	See component documentation

Notice

The documentation for the main components is a part of the product documentation.

► See product description or operating manuals from suppliers e.g. for the compressor drive motor, condenser and evaporator.

3.3.1 Screw compressor

The screw compressor is characterised by a compact design, high reliability, high-quality components and ease of maintenance.

Screw compressors are dual rotor positive displacement machines that work according to the displacement principle and are operated by oil injection.

The screw compressor is operated with ammonia (NH₃) as the refrigerant.

Specific machine oils are recommended depending on application. These are stated in the specification or can be determined using a limited selection in the product configurator.

Caution

Different types of oil that are not indicated in the specification must be agreed with the manufacturer.

► Contact the design or service department of GEA Refrigeration Germany GmbH.

Various series and frame sizes of screw compressors are available for different fields of application.

The screw compressor is driven directly by the motor via a coupling.

The documentation for the screw compressor (installation instructions, part lists, drawings) is an integral part of the product documentation.

¹⁰ Component is part of the compressor.

3.3.2 Compressor drive motor

Standard: The compressor is driven by an air-cooled 2-pole electric motor IP23 with an operating voltage of 400 V; 50 Hz using a coupling.

The motor speed is controlled using a frequency converter (optional equipment with chillers of the FX P and FX P duo series).

The maximum speed range is at 1000 rpm ... 4500 rpm, but is limited in both directions depending on the product and application.

The technical specifications provide information about the permissible speed range. Depending on the application, foot motors as per design IM B3, flange motors as per design IM B5, or a combination (design IM B35) are used.

Optional: Other manufacturers, operating voltages, frequencies, protection and efficiency classes, additional monitoring sensors and anti-condensation heaters, products without motor are available (to be supplied by the customer). Others on request.

The documentation for the electric motor (operating manual) is an integral part of the product documentation.

Notice

The use of an anti-condensation heater should be considered if there is a risk of condensation forming on the motor/product at the installation site, especially if high humidity levels above 60% and/or large temperature fluctuations are expected (especially motors that are at a standstill in humid environments).

► Whether this technical design is necessary must be decided by the customer/operator based on the actual system.

3.3.3 Coupling

The coupling helps in transmission of torque between compressor and compressor drive motor. The design of the coupling brings about decoupling from otherwise disturbing influences such as axial or radial forces, vibrations or offset.

Speed fluctuations and speed shocks are damped and cushioned, while torsional vibrations are reduced.

The documentation of the coupling (operating manual) is a part of the product documentation.

3.3.4 Evaporator and liquid separator

In the evaporator heat is absorbed from the secondary refrigerant (which is thereby cooled) by way of evaporation of the refrigerant. The evaporator works on the principle of flooded evaporation with external circulation.

The module-welded heat exchanger plates, made from AISI 304 stainless steel (other materials on request), are clamped together between the pressure plates using pulling bolts and attached to the upper carrying rod and the lower guide rail. The individual plate modules are sealed on the refrigerant side with elastomer ring seals and on the cooling or cooling agent side with elastomer field seals (adhesive-free).

Liquids are effectively separated in the liquid separator.

The evaporator in the operating state is flooded with ammonia up to the height of the upper sight glass in the circulation line.

Non-soluble heavier oil is deposited in the oil dome and returns automatically controlled from there to the compressor or compressors. For further details, see Oil return system section.

In the case of external condensing systems, a maximum level indicator is installed in the liquid separator to provide additional protection against overfilling.

The suction pressure and cooling agent outlet temperature are monitored to provide reliable protection against freezing of the evaporator.

The liquid separator and suction line are supplied with water vapour diffusion-proof insulation.

Design, manufacture and acceptance comply with the requirements of the pressure appliances directive.

The documentation of the evaporator/ liquid separator (operating manual, acceptance certificate) is a part of the product documentation.

Design of the suction line

For evaporator version "O" (chiller without evaporator / condenser unit):

Prevent re-condensation and liquid refrigerant in the suction line in front of the compressor by ensuring the following design characteristics!

The horizontal part of the suction line should be (slightly) tilted towards the liquid separator / evaporator ($0^\circ < \alpha < 30^\circ$). Depending on the temperatures of the machine room and the evaporation, the suction line should be insulated as follows:

$t_{\text{evaporation}} > t_{\text{Machine room}} + 10 \text{ K} \rightarrow$ insulation of suction line (1.)

$t_{\text{evaporation}} > t_{\text{Machine room}} + 15 \text{ K} \rightarrow$ insulation of suction line (1.) and trace heating of the vertical part of the line in front of the compressor (2.)

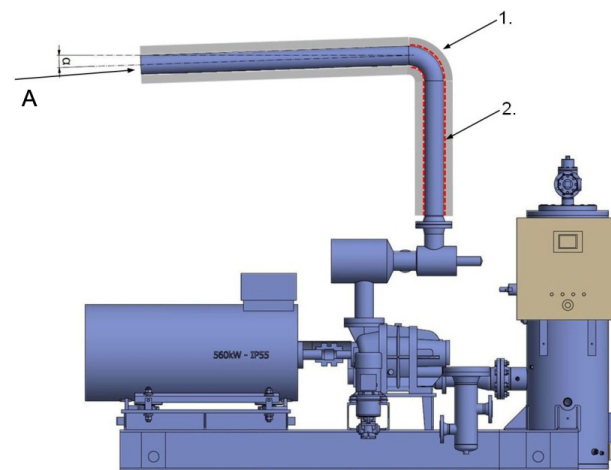


Fig.3: Design of the suction line

1	Insulation of suction line
2	Trace heating
A	from liquid separator / evaporator

3.3.5 Condenser with expansion valve

In the condenser the compressed refrigerant vapour is heated, liquefied and supercooled by dissipating the heat energy absorbed in the evaporator and compressor to the cooling medium.

The expansion valve relieves the condensed refrigerant of the condensation pressure on suction pressure.

The documentation of the evaporator (operating manual, acceptance certificate) is an integral part of the product documentation.

3.3.6 Oil separator

The design of the oil separators is standardised and features less oil carry-over and low oil consumption.

In chillers with compressors from the M series, the oil separator is horizontally mounted.

For chillers with compressors from the LT series, the oil separator is vertically mounted.

The documentation for the oil separator (operating and maintenance manuals, acceptance certificate) is an integral part of the product documentation.

Oil heater

Electric oil heaters are built into the oil separator to pre-heat the oil refrigerant mixture in the oil separator during the standstill of the chiller package. The oil heater prevents condensation of the refrigerant into the oil and, thus, any foaming of the oil during start-up.

Oil heaters are equipped with:

- **Temperature controller** to maintain a constant oil temperature in the oil separator
(adjustable from 20 °C to 150 °C, preset at 60 °C)
- **Temperature limiter** in case of faults, e.g. protection against dry runs
(set permanently to 150 °C)

The oil heater is switched on when the chiller package is stopped and is switched off automatically on starting. A manual switch-off for long standstill periods is recommended.

The documentation for the oil heater (operating and maintenance manuals, acceptance certificate) is an integral part of the product documentation.

3.3.7 Oil cooler

The oil cooler is used for cooling the oil heated in the compressor to a temperature that ensures sufficient oil viscosity for supply to the compressor.

As standard, minimum oil temperature is maintained by oil temperature control using a 3-way valve. Unless otherwise specified, the oil cooler has all the pipelines on the coolant side.

Depending on the product/application, the oil cooler is an optional component and is replaced with the injection of refrigerant into the compressor to cool the compression process.

For heat pumps and applications with heat recovery, a type of liquid cooling is used in which the oil cooler releases the oil's heat to a liquid medium (cooling medium/heat carrier).

The documentation for the oil cooler (operating manual, acceptance certificate) is an integral part of the product documentation.

3.3.8 Oil filter system with OMC-block (oil management centre) screw compressor

After cooling, the oil passes into the oil filter which holds back solid particles from the full oil flow.

Due to its large surface, the oil filter has a high absorbing capacity and thus a long operating lifetime. Depending on the application, the relative filter fineness is between 10 and 25 µm.

An additional coarse filter with a relative filter fineness between 40 and 80 µm may be installed upstream depending on the application.

The OMC block includes the oil distribution system of the oil circuit. Necessary control and shut-off fittings are integrated in the OMC block. Connections for temperature and pressure sensors as well as service ports are available. The OMC block is combined with a standardised filter system and oil pump units (if present) and forms the central control and regulation unit within the oil circuit.

Optionally, the OMC block can be equipped with a 3-way valve element (to ensure a minimum oil temperature when starting the compressor, not available as standard for all applications/products).

The documentation for the OMC block (operating manual, acceptance certificate) is an integral part of the product documentation

Notice

The OMC cannot be used under certain conditions (such as applications with high oil volume flows of more than 340 l/min and all products with a maximum permissible pressure higher than 40 bar).

► In this case, all of the parts that are usually integrated in the OMC are installed separately in the oil circuit.

3.3.9 Oil pump

The oil pump is an essential component of the oil circuit. It is used for pumping and distributing refrigerator oil and ensures that the oil is distributed to the individual lubricating points (e.g. radial bearings, balance piston and the stuffing box of the compressor).

Under certain conditions, products based on the screw compressor of the GEA Grasso M series can or must be operated without a pump. In this case, the pressure difference between the suction and discharge sides of the compressor is used to ensure the oil supply.

The documentation of the oil pump (operating manual, acceptance certificate) is a part of the product documentation.

3.3.10 Suction filter combination (screw compressor)

The suction filter combination contributes substantially to the high working reliability of the components and the overall product.

The suction filter combination prevents dirt particles carried by the suction flow from entering the screw compressor. The flow through the suction filter element is from the inside to the outside. It is designed such that monitoring is not required. The filter element can be cleaned.

The default integrated check valve prevents pressure compensation to the suction side after switching off. Depending on the design, it is closed with a spring or by a hot gas pulse when switched off.

The documentation of the suction filter combination (operating manual, acceptance certificate) is an integral part of the product documentation.

Compressor frame sizes C to N are equipped with a suction filter check valve integrated in the compressor as standard.

3.3.11 Control cabinet with control

The product is equipped with a GEA Omni control as standard.

The switching cabinet and control device consists of the control with operating and display unit, indicator lights for "Operation", "Warning" and "Fault", EMERGENCY STOP button, coupling elements as well as the casing.

For motors with an output power of up to 450 kW, the control cabinet with the control is directly mounted on the product.

For certain product series, the control cabinet can be optionally removed from the scope of delivery. In this case, only the GEA Omni control is mounted in a control cabinet on the product.

If the product operates with variable speed (standard for the GEA Blu chiller and GEA Red heat pump series), the frequency converter is integrated in the control cabinet.

Notice

Depending on the motor size, the frequency converter (FC) must be installed in a separate cabinet. Depending on the application, the complete control cabinet is mounted in a different configuration than the one shown, or the FC cabinet is supplied separately.

► Details can be found in the project-specific specifications or the order drawings.

More details on the functional scope of the control can be found in the separate chapter concerning the GEA Omni.

The documentation for the control (operating manual, circuit diagram, parameter list, communication guideline) is an integral part of the product documentation.

Notice

The communication guideline offers detailed information about communication of the controller.

► The communication guideline can be made available before a planned installation.

3.3.12 Fittings

The term 'fittings' generally designates a control element of the product. Among other things, the term 'fittings' is also used for valves if they are used for the control and regulation of fluid flows in the pipes.

Furthermore, all kinds of installations in pipes, such as sight glasses, measurement apertures, filters and similar, are also designated as fittings. Therefore, fittings also include all kinds of valves, such as

- Stop valves
- Check valves
- Safety valves
- Throttle valves

Each fitting has its own field of use, according to the pressure or temperature in the pipe, the size of the pipe, the sealing requirements for the fitting, the reduction and direction of the flow of liquid, as well as the medium itself.

The safety fittings are used to limit the pressure in systems which are under pressure.

Each fitting is designed for the specific application. The fittings can be operated manually or by motor, e.g. by gear motors, or pneumatic or hydraulic cylinders. In reset fittings, the flow of fluid in the pipe causes automatic closing of the valve.

Depending on the model, different closing elements (e.g. valve discs, flaps, washers) close the pipe connected to the fitting.

The documentation of the fittings (acceptance certificate) forms part of the product documentation.

3.3.13 Safety devices

The product is equipped with a comprehensive software safety chain preventing excessive pressures, temperatures and the hazard of freezing.

A suction as well as condenser pressure control and a rated current limitation control will adjust the speed if the set limit values are exceeded.

Due to the applicable laws and regulations, various certifying bodies require a vast range of auxiliary equipment with independent safety devices.

The following safety equipment is included, if the chiller is delivered with CE label according to EN 378:

- Overflow valve (on the compressor) from discharge to suction side,
- Dual safety valve with blow-out connection, installed on the low pressure side of the product,

Notice

Correct installation of the blow-out connection.

- The contractors must guarantee that the pressure relief connection is safely operated to the outside.

- Safety pressure limiter via 2 switching positions with manual internal and external reset (one switching level may be enough for some applications)
- Pressure relief device for each closable container which can contain liquid refrigerant.

This applies to all vessels in accordance with the requirements of the Pressure Equipment Directive.

The scope of delivery does not include the following safety devices in relation to escaping ammonia:

- Protective equipment (health and industrial safety)
- Gas warning device / gas warning sensors (included in the GEA BluAir and GEA BluAir duo series as standard)

In case of delivery according to EN 378 with CE label, all parts of the documentation mentioned in the regulation are also supplied in the national language.

All other approvals have to be agreed upon separately.

3.3.14 Safety devices for pressure limitation

The safety devices for pressure limitation of the product comply with EN 378-2.

The overflow valve for the protection of the compressor is designed according to EN 13136.

The blow-off pressure of the safety device is set to a pressure \leq the maximum permissible pressure of the system.

The blow-off pipe has been calculated according to EN 13136.

The electromechanical safety switching devices for pressure limitation comply with EN12263 and are type-tested. The settings correspond to the specifications of EN 378-2.

If electronic safety switching devices are used for pressure limitation, the setting may deviate from the standard specifications (see EN 378-2) due to the increased precision.

Notice

When using safety valves for pressure relief, the operator is responsible for:

- the calculation of the dimensioning of the blow-off pipes upstream of the safety valve,
- the safe discharge of refrigerant when the pressure relief device responds.

The safety equipment for pressure limitation according to EN 378-2 represents the minimum requirements. Therefore, before commissioning, the specifications from the national operational safety regulations must be compared with those of EN 378-2.

For the safe function of the safety devices for pressure limitation, the specified test intervals must be observed. These result from the respective industrial safety regulations.

3.3.15 Components installed by the client



Warning

GEA Refrigeration Germany GmbH does not assume any liability for arising damages or for the violation of the safety regulations resulting from the use of unsuitable materials or a modification to the product that is not included in the original safety concept.

► The material properties of components and system parts provided by and monitored by the customer, in particular in the secondary refrigerant and heat carrier or coolant circuit as well as in the oil circuit, must be suitable for the fluids flowing there. Furthermore, in the event of modifications to the product by the customer, the effects upon the safety devices must be checked.

4 GEA Omni control

4.1 Product highlights

GEA stands for sophisticated precision solutions. The system provider once again demonstrates its technological leadership and innovation with the new GEA Omni control system.

Powerful and practical, sophisticated and intuitive, refined and simple. This is GEA Omni.

GEA Omni delivers what it promises: maximum efficiency and reliable system operation. The next generation control integrates all important components of a refrigeration and gas compression plant. This permits the system to be operated according to demand and in a particularly efficient manner.

GEA Omni advantages at a glance:

- System control with one device
→ Control of the refrigeration system with GEA Omni
- High-resolution display
→ 1366 x 768 pixel
- Multitouch display
→ Ergonomic and intuitive input
- Easy integration
→ Easy installation on site, ideal for retrofitting existing systems
- Configurable Modbus TCP communication
→ Data exchange with other systems without additional cabling required
- Hardware design
→ Standard industrial components with modular design
- Individual user profiles and management
→ Setup of individual user profiles and record user entries made
- Drawings, manuals and videos
→ Technical documentation including helpful videos can be accessed directly via the touch panel
- Intelligent service intervals
→ Timely modification of maintenance recommendations depending on the operation
- GEA OmniLink
→ Application for remote control of the GEA Omni via Ethernet with integrated data transmission
- GEA OmniHistorian
→ Application for detailed analysis of recorded operating data histories
- Global product with local sales and service
→ Product available worldwide in a uniform design

- Production in North America, Europe and Asia
→ available in over 25 languages
- Reliability with GEA
→ Developed, manufactured and supported by the market leader for control systems for refrigeration and gas compression systems

4.2 View



Fig.4: GEA Omni exterior view without indicator lights



Fig.5: GEA Omni exterior view with indicator lights

4.3 Standard function

The GEA Omni supports the following standard functions:

- Display of all important physical and technical parameters, e.g. pressure, temperature, motor current, capacity, number of run hours, operation mode and status signals,

Different parameters and menus are hidden if they are not needed.

- Automatic start/stop of the product and capacity control depending on, for example:
 - Suction pressure
 - Discharge pressure
 - External setpoint value
 - External temperature
 - Network temperature
 - Inlet temperature (evaporator, secondary refrigerant)
 - Outlet temperature (evaporator, secondary refrigerant)
 - Inlet temperature (condenser, secondary refrigerant or heat carrier)
 - Outlet temperature (condenser, secondary refrigerant or heat carrier)
- Monitoring of all operating parameters.

- Limitation of the compressor capacity as soon as one of the defined limit values is reached or exceeded.
- Notification history (messages, warnings and faults) with date and time.
- Wire failure detection for all analogue input signals.
- Password protection to prevent unauthorised access to important parameters
- Saving of software, configuration and settings in non-volatile memory.
- Control via master controller via floating contacts.
- Programme saved on non-volatile CFast card.
- Possibility of communication with master controller via Modbus TCP, Ethernet/IP.
(optionally via Profibus-DP and ProfiNet)
- Remote access (optional via Ethernet)

4.4 Components of GEA Omni

- Control cabinet (different sizes and mounting options, see - IEC standard IP54 / NEMA 4 minimum classification)
- Control cabinet with:
 - Industrial PC with multi-touch screen and HD display for operation
 - EMERGENCY-OFF switch - directly connected to the control outputs to be able to switch off all rotating components immediately.
 - USB interface - with IP54 cover for data exchange with the industrial PC
 - Optional indicator lights for:
 - “operation” – for status displays start, operation or stop of the compressor
 - “warning” – for the display that an operating condition has exceeded the limit value for a warning.
 - “fault” – for indicating that the compressor is switched off.
- Control cabinet interior view:
 - Power supply for the industrial PC, input and output circuits and sensor
 - Frequency converter (optional or standard depending on the product)
 - I/O system – as interface for all monitored digital and analogue inputs and regulated outputs
 - Connections – for incoming power supply and cabling connections
 - Fuses and circuit breakers - as short-circuit and overvoltage protection. Industrial PC and I/O logic are protected with a fuse. The power supplies of the control system and the sensors are protected by circuit breakers
 - Cable ducts - as a guide for internal cabling



Fig.6: GEA Omni control cabinet interior view (frequency converter installed in control cabinet)

4.5 Input and Output Signals

Low-voltage switchgear - GEA Omni	
from the low-voltage switchgear to the GEA Omni INPUTS	from the GEA Omni to the low-voltage switchgear OUTPUTS
Not applicable if the scope of delivery contains a low-voltage switchgear.	
Input: 100 ... 240 V, 50/60 Hz	
digital <ul style="list-style-type: none"> • Motor feedback • Motor protection compressor • Feedback external oil pump ¹¹ 	digital <ul style="list-style-type: none"> • Run compressor • Run external oil pump ¹¹ • Confirm malfunction
analogue (4-20 mA) <ul style="list-style-type: none"> • Motor current compressor drive motor • Speed compressor drive motor ¹² 	analogue (4-20 mA) <ul style="list-style-type: none"> • Compressor drive motor speed setpoint ¹²

Remote controller or control system - GEA Omni	
from the remote controller (control system) to the GEA Omni INPUTS	from the GEA Omni to the remote controller (control system) OUTPUTS
digital <ul style="list-style-type: none"> • External ON/OFF • External "MORE" • External "LESS" • External run release • Confirm external fault • Switchover 2. Setpoint • Block compressor 	digital <ul style="list-style-type: none"> • Ready for external mode • Signal Compressor runs • Main failure • auxiliary output 1 (Default setting collective warning)
analogue (4-20 mA) <ul style="list-style-type: none"> • Remote setpoint 	analogue (4-20 mA) <ul style="list-style-type: none"> • Swept volume

¹¹ If fitted.

¹² Only when operated with a frequency converter.

Chiller / heat pump - GEA Omni	
from the cooling system / heat pump to the GEA Omni INPUTS	from the GEA Omni to the cooling system / heat pump OUTPUTS
<p>digital</p> <ul style="list-style-type: none"> external EMERGENCY-OFF (or EMERGENCY-STOP) Separator level ¹³ Eco-level ¹³ Gas sensor Discharge pressure safety switch min. oil level ¹⁴ max. oil level ¹⁴ Level of refrigerant top / bottom ¹³ 	<p>digital:</p> <ul style="list-style-type: none"> Solenoid valve capacity control max. ¹⁵ Solenoid valve capacity control min. ¹⁵ Solenoid valves capacity control ¹⁶ Solenoid valve check valve suction side ^{13, 15} Solenoid valves Vi-control ^{13, 15} Solenoid valve economizer operation ¹³ Solenoid valve start-up unloading ¹³ Solenoid valves, oil return Solenoid valve low pressure-high pressure relief ¹¹ Solenoid valve oil return from fine oil filter stage ¹¹
<p>analogue (4-20 mA)</p> <ul style="list-style-type: none"> Control / primary slide position ¹⁵ Vi / control slide stop position ^{13, 15} suction pressure discharge pressure Oil pressure Pressure after oil filter ¹⁵ Crankcase pressure ¹⁶ Evaporating pressure ¹⁷ Suction temperature Discharge temperature Oil temperature Oil temperature oil separator sump ¹¹ Oil temperature compressor on / off ¹⁸ Eco temperature ¹¹ Eco pressure ¹¹ Secondary refrigerant temperature on/off ¹⁹ Inlet temp. refrigerant low pressure cooling system ²⁰ 	<p>analogue (4-20 mA)</p> <ul style="list-style-type: none"> Setpoint level control ¹³ Setpoint IntelliSOC injection valve ¹³ Setpoint motor valve suction line ¹¹ Setpoint motor valve remote condenser control ¹¹ Setpoint motor valve hot gas bypass start-up unloading ¹¹

¹³ The signals refer in part to optional features (not available for all products).

¹⁴ For screw compressor, optional.

¹⁵ Depends on compressor type.

¹⁶ For reciprocating compressor.

¹⁷ For heat pumps with motor valve on the suction side.

¹⁸ For heat pumps with reciprocating compressor.

¹⁹ For heat pumps with water/saltwater-based heat sources.

²⁰ For heat pumps with a heat source of NH₃-condensation of the low pressure cooling system.

Chiller / heat pump - GEA Omni	
from the cooling system / heat pump to the GEA Omni INPUTS	from the GEA Omni to the cooling system / heat pump OUTPUTS
<ul style="list-style-type: none"> • Outlet temp. refrigerant low pressure cooling system ²¹ • Heat carrier / cooling medium temperatures ²² 	

²¹ For heat pumps with a heat source of NH₃-condensation of the low pressure cooling system (is substituted with the discharge temperature sensor of the low pressure level for products of the GEA Blu-Red Fusion series).

²² For heat pumps heat carrier temperature sensors on/off for every heat exchanger standard, for chillers optional, only 1x inlet/outlet respectively into / out of the product.

5 Technical data

5.1 Dimensions, weights, fill quantities and connections

Notice

All data are subject to change and only for the first overview.

► All of the figures and data are for the standard equipment of GEA Grasso products. (Special) options, such as Economizer vessels and oil separators, can have a corresponding affect on the charging quantities, dimensions and weights.

► GEA Refrigeration Germany GmbH reserves the right to make technical changes or change supplier during the course of further development of the products covered by this product information.

► Illustrations and drawings in this product information are simplified representations.

► The technical data and dimensions are subject to change. No claims can be made on the basis of them.

► More accurate details shall be provided by the respective technical proposal for one of the products listed.

5.1.1 GEA Grasso FX PP 200 ... series GEA Grasso FX PP 350

Notice

The data is applicable to the following conditions:

► **Temperature of the secondary refrigerant + 12°C / + 6°C**

► **Temperature of the refrigerant + °C / + 32°C**

Data may differ in other conditions.

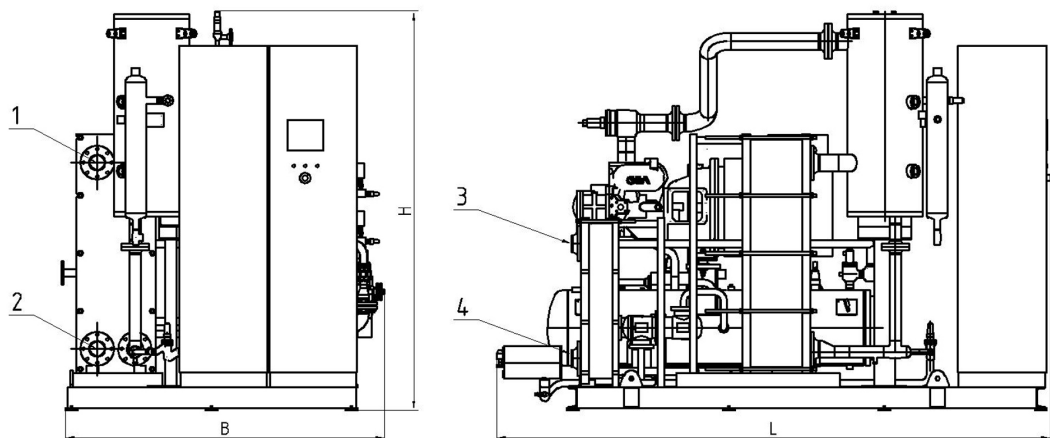


Fig.7: GEA Grasso FX PP 200 ... GEA Grasso FX PP 350

1	Secondary refrigerant outlet
2	Secondary refrigerant inlet
3	Cooling medium outlet
4	Cooling medium inlet

Technical data

Dimensions, weights, fill quantities and connections

Characteristics					
Parameter		GEA Grasso FX PP ... chillers with M series compressors			
		200 ²³	250 ²³	300 ²³	350 ²³
Length	mm	2200	2200	2600	2600
Width	mm	1800	1800	2000	2000
Height	mm	2200	2200	2400	2400
Connection Cold water IN	DN	100	100	100	100
Connection Cold water OUT	DN	100	100	100	100
Connection Cooling water ON	DN	100	100	100	100
Connection Cooling water OFF	DN	100	100	100	100
Connection safety valve Blow-off line	DN	25	25	25	25
Connection oil cooler	Inch	1 1/2	1 1/2	1 1/2	1 1/2
Power supply	kW	55	55	75	75
Weight without charging	kg	3300	3400	3500	3600
Operating weight	kg	3450	3550	3650	3750
Filling quantity (Oil)	l	80	80	80	80
Charge (Refrigerant NH ₃)	kg	29	30	31	32

23 subject to technical changes

5.1.2 GEA Grasso FX PP 450 ... series GEA Grasso FX PP 900

Notice

The data is applicable to the following conditions:

- Temperature of the secondary refrigerant + 12°C / + 6°C
- Temperature of the refrigerant + °C / + 32°C

Data may differ in other conditions.

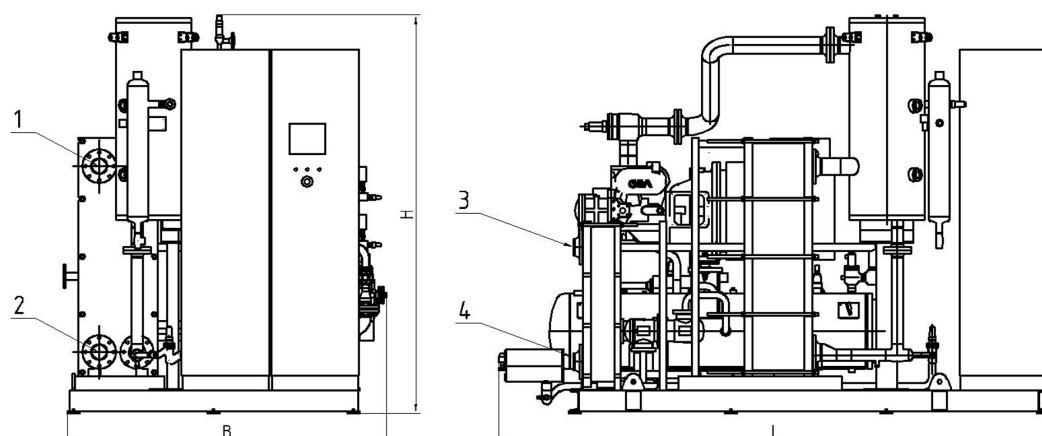


Fig.8: GEA Grasso FX PP 450 ... GEA Grasso FX PP 900

1	Secondary refrigerant outlet
2	Secondary refrigerant inlet
3	Cooling medium outlet
4	Cooling medium inlet

Characteristics					
Parameter		GEA Grasso FX PP ... chillers with M series compressors			
		450 ²⁴	550 ²⁴	650 ²⁴	900 ²⁴
Length	mm	3900	4000	4200	4400
Width	mm	2200	2200	2300	2300
Height	mm	2450	2450	2650	2650
Connection Cold water IN	DN	100	100	100	100
Connection Cold water OUT	DN	100	100	150	150
Connection Cooling water ON	DN	100	100	100	100
Connection Cooling water OFF	DN	100	100	150	150
Connection safety valve Blow-off line	DN	25	25	25	25
Connection oil cooler	Inch	1 1/2	1 1/2	1 1/2	1 1/2
Power supply	kW	110	132	160	200

²⁴ subject to technical changes

Technical data

Dimensions, weights, fill quantities and connections

Characteristics					
Parameter		GEA Grasso FX PP ... chillers with M series compressors			
		450 ²⁴	550 ²⁴	650 ²⁴	900 ²⁴
Weight without charging	kg	4700	5000	7100	7800
Operating weight	kg	4950	5300	7400	8150
Filling quantity (Oil)	l	90	90	120	120
Charge (Refrigerant NH ₃)	kg	72	75	95	100

²⁴ subject to technical changes

5.1.3 GEA Grasso FX PP 800 ... series GEA Grasso FX PP 2800

Notice

The data is applicable to the following conditions:

- Temperature of the secondary refrigerant + 12°C / + 6°C
- Temperature of the refrigerant + °C / + 32°C

Data may differ in other conditions.

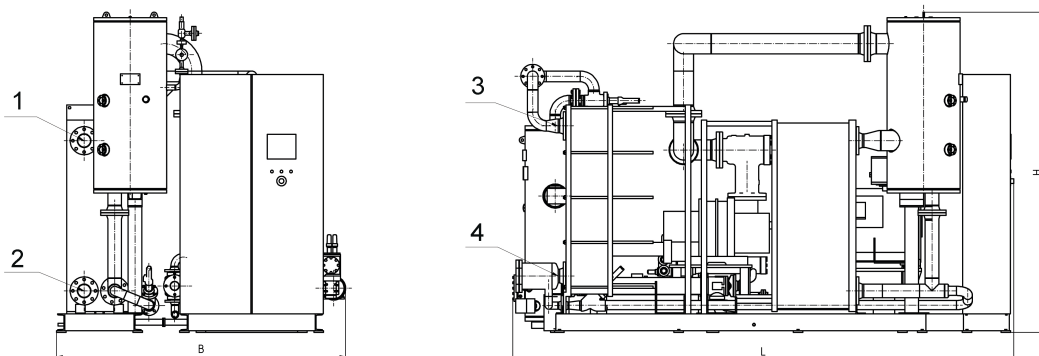


Fig.9: GEA Grasso FX PP 800 ... GEA Grasso FX PP 2800

1	Secondary refrigerant outlet
2	Secondary refrigerant inlet
3	Cooling medium outlet
4	Cooling medium inlet

Characteristics									
Parameter		GEA Grasso FX PP ... chillers with LT series compressors							
		800 ²⁵	1100 ²⁵	1300 ²⁵	1500 ²⁵	1700 ²⁵	2000 ²⁵	2400 ²⁵	2800 ²⁵
Length	mm	4200	4500	4500	5000	5500	6000	6700	7000
Width	mm	2300	2450	2600	2600	2700	2900	3000	3000
Height	mm	2700	2700	2700	2700	3100	3500	3500	3500
Connection Cold water IN	DN	150	150	150	150	200	200	200	200
Connection Cold water OUT	DN	150	150	150	150	200	200	200	200
Connection Cooling water ON	DN	150	150	150	150	200	200	200	200
Connection Cooling water OFF	DN	150	150	150	150	200	200	200	200
Connection safety valve Blow-off line	DN	25	25	25	25	25	25	25	25
Connection oil cooler	Inch	1 1/2	1 1/2	1 1/2	1 1/2	2	2	2	2
Power supply	kW	200	250	315	315	355	400	450	560
Weight without charging	kg	8400	9000	9500	10000	12000	13000	15000	18000
Operating weight	kg	8750	9500	10100	10800	12900	14200	16400	19600

²⁵ subject to technical changes

Technical data

Dimensions, weights, fill quantities and connections

Characteristics									
Parameter		GEA Grasso FX PP ... chillers with LT series compressors							
		800 ²⁵	1100 ²⁵	1300 ²⁵	1500 ²⁵	1700 ²⁵	2000 ²⁵	2400 ²⁵	2800 ²⁵
Filling quantity (Oil)	l	150	160	160	160	210	210	260	270
Charge (Refrigerant NH ₃)	kg	83	130	150	190	240	300	370	450

²⁵ subject to technical changes

5.1.4 GEA Grasso FX PP 3300 ... series GEA Grasso FX PP 8000

Notice

The data is applicable to the following conditions:

- Temperature of the secondary refrigerant + 12°C / + 6°C
- Temperature of the refrigerant + °C / + 32°C

Data may differ in other conditions.

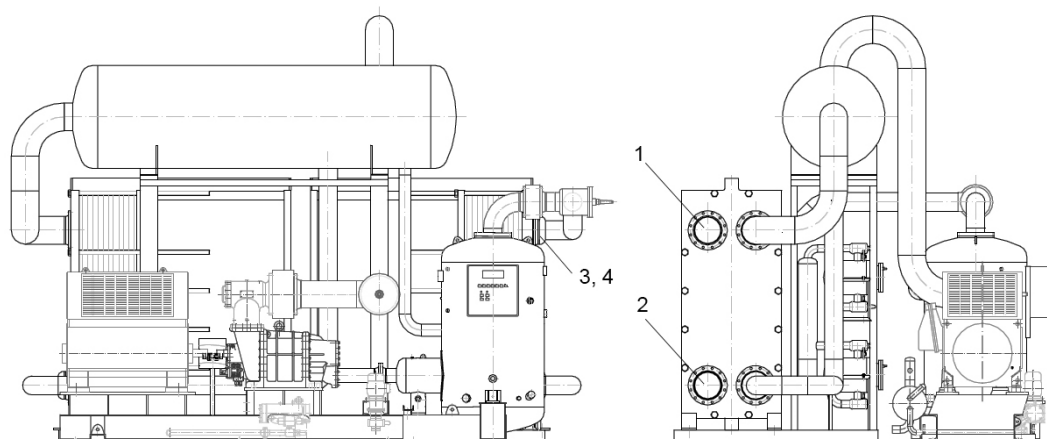


Fig.10: GEA Grasso FX PP 3300 ... GEA Grasso FX PP 8000

1	Secondary refrigerant outlet
2	Secondary refrigerant inlet
3	Cooling medium outlet
4	Cooling medium inlet (not shown in the picture)

Characteristics							
Parameter		GEA Grasso FX PP ... chillers with LT series compressors					
		3300 ²⁶	4200 ²⁶	5000 ²⁶	5800 ²⁶	7000 ²⁶	8000 ²⁶
Length	mm	6800	7000	7500	8000	9000	9000
Width	mm	3300	4000	4500	4500	5000	5000
Height	mm	5000	5000	5000	5000	5500	5500
Connection Cold water IN	DN	200	200	300	300	300	300
Connection Cold water OUT	DN	200	200	300	300	300	300
Connection Cooling water ON	DN	200	200	300	300	200	200
Connection Cooling water OFF	DN	200	200	300	300	200	200
Connection safety valve Blow-off line	DN	50	50	50	50	65	65
Connection oil cooler	Inch	50	50	65	65	65	65
Power supply	kW	630	850	1000	1200	1400	1600
Weight without charging	kg	22000	25000	27500	30000	32000	34000
Operating weight	kg	24000	27000	29700	32500	34500	37000

²⁶ subject to technical changes

Technical data

Dimensions, weights, fill quantities and connections

Characteristics							
Parameter		GEA Grasso FX PP ... chillers with LT series compressors					
		3300 ²⁶	4200 ²⁶	5000 ²⁶	5800 ²⁶	7000 ²⁶	8000 ²⁶
Filling quantity (Oil)	l	300	550	680	750	800	950
Charge (Refrigerant NH ₃)	kg	450	450	750	800	800	850

²⁶ subject to technical changes

5.1.5 GEA Grasso FX LP, VP 200 ... size GEA Grasso FX LP, VP 350

Notice

The data is applicable to the following conditions:

- **Temperature of the secondary refrigerant + 12°C / + 6°C**
- **Condensation temperatures from + 35 °C (VP) or + 45 °C (LP)**

Data may differ in other conditions.

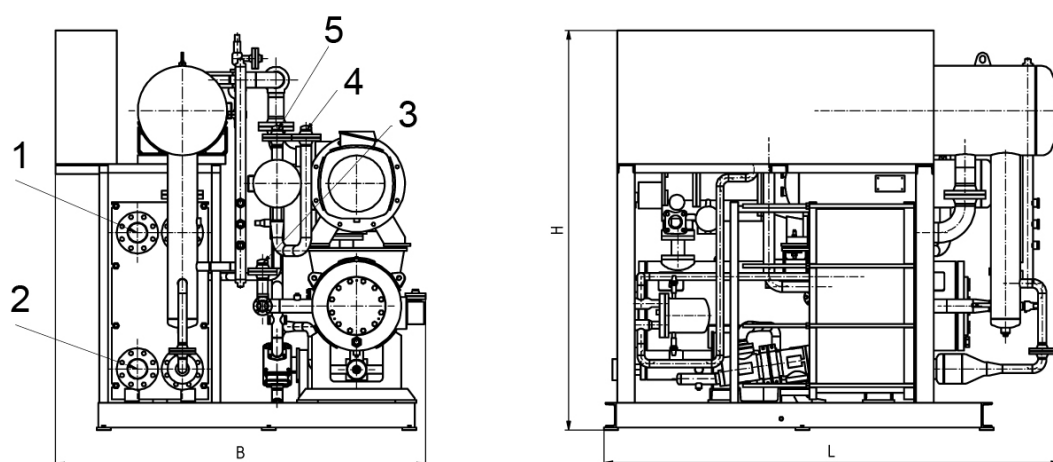


Fig.11: GEA Grasso FX LP, VP 200 ... GEA Grasso FX LP, VP 350

1	Secondary refrigerant outlet
2	Secondary refrigerant inlet
3	Hot gas outlet
4	Liquid inlet
5	Pressure compensation

Characteristics					
Parameter		GEA Grasso FX LP, VP ... chillers with M series compressors			
		200 ²⁷	250 ²⁷	300 ²⁷	350 ²⁷
Length	mm	2200	2200	2400	2400
Width	mm	2000	2000	2000	2000
Height	mm	2200	2200	2400	2400
Connection Cold water	DN	100	100	100	100
Connection Pressure line	DN	50	50	50	50
Connection Liquid line	DN	32	32	32	32
Connection Gas recirculation line	DN	25	25	25	25
Electrical connection (LP)	kW	75	75	90	90
Electrical connection (VP)	kW	55	55	75	90
Weight without charging	kg	2900	3000	3100	3200

²⁷ subject to technical changes

Technical data

Dimensions, weights, fill quantities and connections

Characteristics					
Parameter		GEA Grasso FX LP, VP ... chillers with M series compressors			
		200 ²⁷	250 ²⁷	300 ²⁷	350 ²⁷
Operating weight	kg	3100	3200	3300	3400
Filling quantity (Oil)	l	80	80	80	80
Charge (Refrigerant NH ₃)	kg	40	41	42	43

²⁷ subject to technical changes

5.1.6 GEA Grasso FX LP, VP 450 ... size GEA Grasso FX LP, VP 900

Notice

The data is applicable to the following conditions:

- **Temperature of the secondary refrigerant + 12°C / + 6°C**
- **Condensation temperatures from + 35 °C (VP) or + 45 °C (LP)**

Data may differ in other conditions.

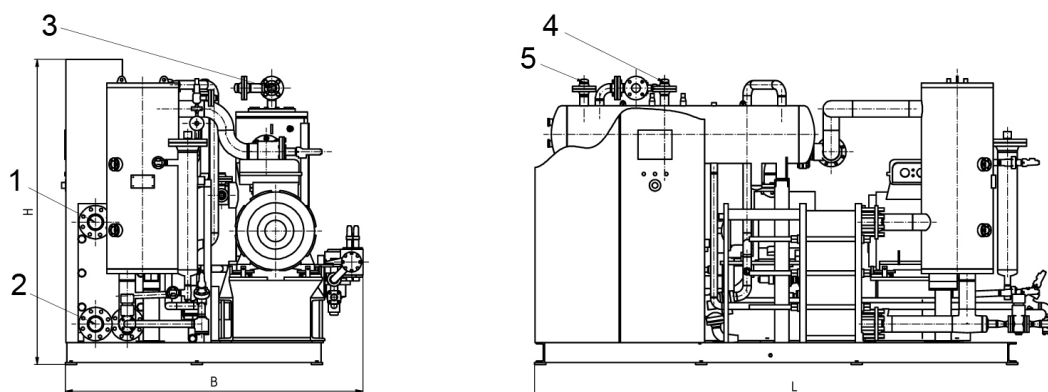


Fig. 12: GEA Grasso FX LP, VP 450 ... GEA Grasso FX LP, VP 900

1	Secondary refrigerant outlet
2	Secondary refrigerant inlet
3	Hot gas outlet
4	Liquid inlet
5	Pressure compensation

Characteristics					
Parameter		GEA Grasso FX LP, VP ... chillers with M series compressors			
		450 ²⁸	550 ²⁸	650 ²⁸	900 ²⁸
Length	mm	3400	3400	3600	3800
Width	mm	2300	2300	2300	2300
Height	mm	2450	2450	2650	2650
Connection Cold water	DN	100	100	100/150	100/150
Connection Pressure line	DN	50	50	60	60
Connection Liquid line	DN	50	50	65	65
Connection Gas recirculation line	DN	50	50	50	50
Electrical connection (LP)	kW	132	160	200	250
Electrical connection (VP)	kW	110	132	160	200
Weight without charging	kg	4200	4500	5500	6500
Operating weight	kg	4450	4800	5770	6800

28 subject to technical changes

Technical data

Dimensions, weights, fill quantities and connections

Characteristics					
Parameter		GEA Grasso FX LP, VP ... chillers with M series compressors			
		450 ²⁸	550 ²⁸	650 ²⁸	900 ²⁸
Filling quantity (Oil)	l	90	90	120	120
Charge (Refrigerant NH ₃)	kg	95	98	103	110

28 subject to technical changes

5.1.7 GEA Grasso FX LP, VP 800 ... size GEA Grasso FX LP, VP 2800

Notice

The data is applicable to the following conditions:

- **Temperature of the secondary refrigerant + 12°C / + 6°C**
- **Condensation temperatures from + 35 °C (VP) or + 45 °C (LP)**

Data may differ in other conditions.

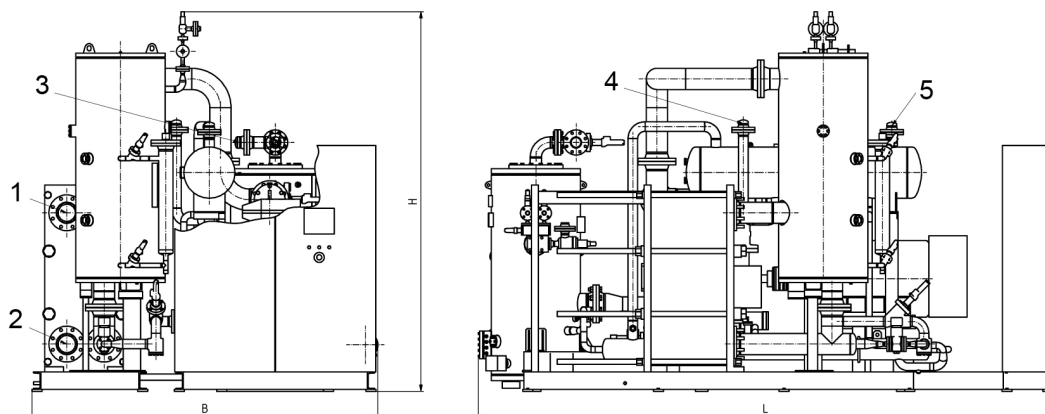


Fig.13: GEA Grasso FX LP, VP 800 ... GEA Grasso FX LP, VP 2800

1	Secondary refrigerant outlet
2	Secondary refrigerant inlet
3	Hot gas outlet
4	Liquid inlet
5	Pressure compensation

Characteristics									
Parameter		GEA Grasso FX LP, VP ... chillers with LT series compressors							
		800 ²⁹	1100 ²⁹	1300 ²⁹	1500 ²⁹	1700 ²⁹	2000 ²⁹	2400 ²⁹	2800 ²⁹
Length	mm	3800	4000	4200	4600	4500	5000	5400	6000
Width	mm	2300	2600	2600	2600	2700	2900	3000	3000
Height	mm	2900	2900	2900	2900	3500	3500	3500	3500
Connection Cold water	DN	150	150	150	150	200	200	200	200
Connection Pressure line	DN	65	80	80	80	100	100	125	150
Connection Liquid line	DN	50	65	80	80	100	100	100	100
Connection Gas recirculation line	DN	50	50	65	65	80	80	80	80
Electrical connection (LP)	kW	250	315	355	400	450	500	560	630
Electrical connection (VP)	kW	200	250	315	315	355	400	450	560
Weight without charging	kg	6100	6900	7600	8700	10000	11500	13000	15000
Operating weight	kg	6400	7350	8100	9300	10800	12500	15000	17300

²⁹ subject to technical changes

Technical data

Dimensions, weights, fill quantities and connections

Characteristics									
Parameter		GEA Grasso FX LP, VP ... chillers with LT series compressors							
		800 ²⁹	1100 ²⁹	1300 ²⁹	1500 ²⁹	1700 ²⁹	2000 ²⁹	2400 ²⁹	2800 ²⁹
Filling quantity (Oil)	l	150	160	160	160	210	210	260	270
Charge (Refrigerant NH ₃)	kg	130	160	200	240	270	300	350	400

29 subject to technical changes

5.1.8 GEA Grasso FX LP, VP 3300 ... size GEA Grasso FX LP, VP 8000

Notice

The data is applicable to the following conditions:

- ▶ **Temperature of the secondary refrigerant + 12°C / + 6°C**
- ▶ **Condensation temperatures from + 35 °C (VP) or + 45 °C (LP)**

Data may differ in other conditions.

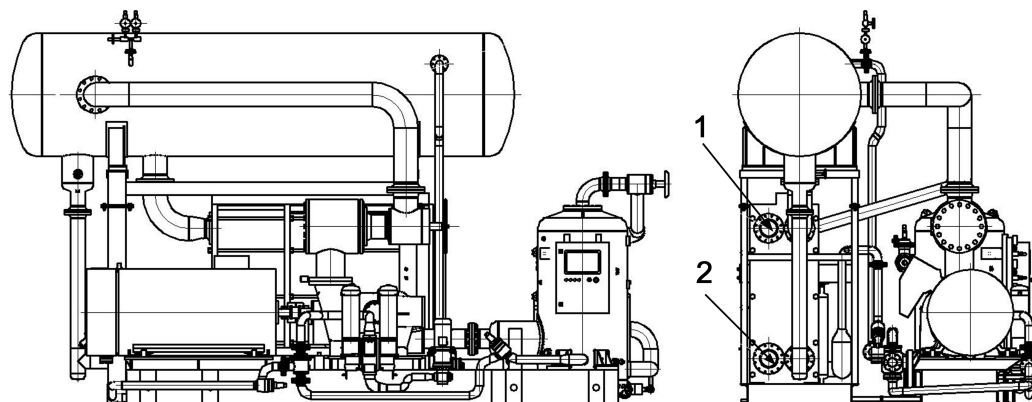


Fig. 14: GEA Grasso FX LP, VP 3300 ... GEA Grasso FX LP, VP 8000

1	Secondary refrigerant outlet
2	Secondary refrigerant inlet

Characteristics					
Parameter		GEA Grasso FX LP, VP ... chillers with LT series compressors			
		3300 ³⁰	4200 ³⁰	5000 ³⁰	5800 ³⁰
Length	mm	6200	6500	7000	7500
Width	mm	3500	4000	4500	4500
Height	mm	5000	5000	5000	5000
Connection Cold water	DN	200	200	300	300
Electrical connection (LP)	kW	710	1100	1300	1500
Electrical connection (VP)	kW	630	850	1000	1200
Weight without charging	kg	18000	23200	24300	24600
Operating weight	kg	21000	25200	26600	27100
Filling quantity (Oil)	l	500	550	680	750
Charge (Refrigerant NH ₃)	kg	420	450	550	650

³⁰ subject to technical changes

5.2 Application limits

The chillers of the series **GEA Grasso FX P** for flooded evaporation can be operated within the specified application limits according to the respective specifications under diverse work conditions. The application limits listed below are based on the operating principle of the screw compressor, thermodynamic relations, containers and safety devices used as well as practical operating conditions. The appropriate compressor model should be selected for the particular operating conditions.

Application limits				
Parameter		Unit	Value	
Refrigerant				NH ₃
Speed	n	min ⁻¹	min	1500
			max	4500
Suction pressure	p ₀	bar (a)	min max	0.7 11.6
Outlet temperature of water as secondary refrigerant	t _{WA}	°C	min max	+ 1 +35
Outlet temperature with frost-resistant secondary refrigerants	t _{WA}	°C	min max	- 40 + 35
Maximum permissible pressure:	PS	bar (a)	min max	8.0 20.3
Condenser inlet temperature of cooling medium	t _{Kwe}	°C	min max	10 48
Condensing temperature	t	°C	min max	18 45
Discharge temperature at compressor outlet ³¹	t ₁	°C	min max	50 100
Pressure ratio p _c /p ₀) ³²	π	-	min	2
Pressure difference (p _c -p ₀) ³³	Δp	bar	min	4

³¹ The minimum discharge temperature t₁ must be 25 K above condensing temperature t and in addition, 25 K above the oil temperature for supply to the bearings for compressors with journal bearings.

³² Gas vibration protection necessary for π ≥ 8.

³³ The given pressure difference ensures reliable compressor operation. Furthermore, allowance must be made for the pressure difference necessary for the control valves fitted in the refrigerating plant.

Notes

- When considering a specific application, all the conditions specified in the table must be taken into account.
- If the specified limits are exceeded for a specific application, the manufacturer must be consulted.
- In addition to the application limits given in the tables, consider the operating conditions which must be observed for the compressor (e.g. start-up regime, oil pressure, oil quantity, type of oil etc.).
- The oil temperature at the compressor inlet must be least 18 °C.
- An oil viscosity of ≥ 7 cSt at $n = 3000 \text{ min}^{-1}$ and ≥ 10 cSt at $n = 1500 \text{ min}^{-1}$ must be ensured for bearing oil supply. Take into account the drop in viscosity due to refrigerant dissolved in the oil!
- The specified data refer to the operating conditions of a cooling or air-conditioning system.
During downtime or start-up, the limiting values may be exceeded or fallen short of for a short (never long-term) period of time.
- The operating parameters of the order confirmation apply for an agreed field test.

5.3 Water quality requirements, parameters

All water bearing components of the manufacturer provide optimum performance and maximum protection from corrosion, if all recommended limiting values of VDI 3803 issue 2010-02 (Tab. B3) for non-corrosive water and adequate water conditioning are met.

Notice

If the limits specified in VDI 3803 are not adhered to, the manufacturer cannot provide any warranty regarding the water-conducting parts of the delivered components.

- All components are designed for use with non-corrosive water. Water and glycol brine analysis is essential in protecting system components. Analyses prior to start up will prevent corrosion.

Following are shown required limiting values of VDI 3803, for use of carbon steel components in non corrosive water systems.

Water quality requirements, parameters			
Parameter		Value	Unit
Appearance		clear, without sediment	
Colour		colourless	
Odour		none	
pH-value at 20 °C		7.5 - 9.0	
Electrical conductivity	LF	< 220	mS/m
Soil alkali	Ca ²⁺ , Mg ²⁺	< 0.5	mol/m ³
General hardness, for stabilization	GH	< 20	°d
Carbonate hardness without hardness stabilizer	KH	< 4	°d
Chloride (see also following information)	Cl	< 150	g/m ³
Sulphur	SO ₄	< 325	g/m ³
Active biological components	KBE	< 10,000	per ml
Thickness factor	EZ	2 - 4	

The use of carbon steel and cast iron required in the most of applications water conditioning with corrosion inhibitors.

The use of stainless steel requires very special monitoring of water in apply to Chloride contents (risk of stress crack and pitting corrosion).

Notice

Recommend for use of plate heat exchangers

- < 100 ppm Cl for the use of 1.4301 (AISI 304) and maximum 40 °C wall temperature in the plate heat exchanger
- < 200 ppm Cl for the use of 1.4401 (AISI 316) and maximum 100 °C wall temperature in the plate heat exchanger

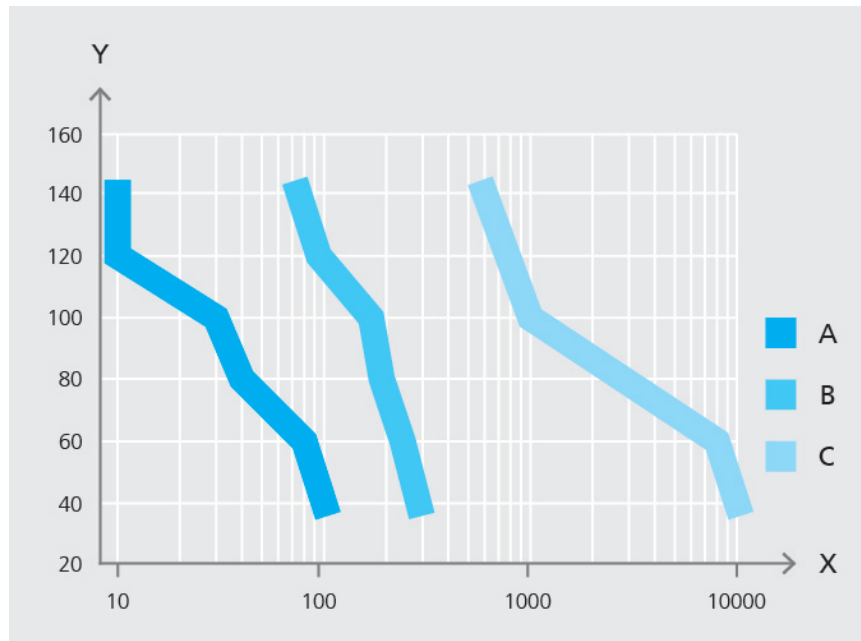


Fig.15: Corrosion resistance in presence of chlorides

X	Chloride ion concentration ppm Cl ⁻
Y	Wall temperature heat exchanger in °C
A	AISI 304
B	AISI 316
C	SMO 254

Notice

Manufacturer recommendation: Use uncontaminated cooling agents and cooling media, in particular in chillers / heat pumps and the use of plate heat exchangers.

- The media quality needs to be assured through an appropriate filter on the inlet to the heat exchanger. The mesh for these kinds of filters needs to be ≤ 0.9 mm!
- Should the system need to remain in operation during filter cleaning, double filters need to be used. Pressure loss through the filter need to be taken into consideration on the building side when configuring the pump.

The manufacturer will inform you on request about qualified specialist companies that can support you in the water analysis and the derived measures.

5.4 Performance characteristics

Notice

The output of the chiller depends on different parameters, for example:

- the temperature regime,
- the efficiency of the heat exchanger used,
- the compressor speed,
- the condenser design.

► The contact person at GEA Refrigeration Germany GmbH will be pleased to prepare a technical offer.

5.5 Sound pressure level

Measuring-surface sound pressure level

Distance to the machine surface: 1 m (A-sound level at free field conditions on reflecting surface) for Liquid Chillers (1 compressor and 1 drive motor)

Determining the measured values:

- Without secondary sound insulation.
- Reduce the above mentioned values by 25-30 dB in case of totally machine casing.

Notice

Measuring-surface sound-pressure level strongly depends on the type of the chiller and especially on the type of the drive motor (manufacturer, type, protection type).

► Because of this the values are guide values, which have to be confirmed by the technical specifications of the project.

Measuring-surface sound pressure level for chillers with compressor frame size C ... N								
Motor	Compressor frame size ... / chiller frame size GEA Grasso FX P ...							
at 40 °C P _e in kW	C / 200	D / 250	E / 300	G / 350	H / 450	L / 550	M / 650	N / 900
45	78	78	78	78	78	78		
55	78	78	78	78	78	78	78	
75	79	79	79	79	79	79	79	79
90		80	80	80	80	80	80	80
110			80	80	80	80	80	80
132				81	81	81	81	81
160					83	83	83	83
200						84	84	84
250							85	85

Measuring-surface sound pressure level for chillers with compressor frame size P ... Z								
Motor	Compressor frame size ... / chiller frame size GEA Grasso FX P ...							
at 40 °C P _e in kW	P / 800	R / 1100	S / 1300	T / 1500	V / 1700	W / 2000	Y / 2400	Z / 2800
160	82							
200	83	83						
250	83	83	83					
315		84	84	84	84	84		
355			85	85	85	85	85	
400				85	85	85	85	85
450					85	85	85	85
500							86	86
560							86	86
630							87	87
700								87
710								87
800								87

Measuring-surface sound pressure level for chillers with compressor frame size XA ... XF				
Motor	Compressor frame size ... / chiller frame size GEA Grasso FX P ...			
at 40 °C P _e in kW	XA / 3300	XB / 4200	XC / 4800	XD / 5800
450	85			
500	86	86		
560	86	86	86	
630	87	87	87	
700	87	87	87	87
710	87	87	87	87
800	87	87	87	87
900	88	88	88	88
1100		89	89	89
1600			90	90

5.6 Information on noise emissions

The noise information provides approximate parameters and applies to the installation without any secondary noise protection measures.

The information has a tolerance of ± 3 dB(A).

The precise data depend closely on the emission values for the motors, which are manufacturer dependent.

Should the local conditions require adherence to noise limits, a calculation should be made in individual cases with specific motor data.

Significant reduction in noise can be achieved through noise protection measures such as motor encapsulation or complete noise reducing housing for the chiller.

For any person spending extended time in rooms with running Chillers, the wearing of personal ear protection with sufficient sound insulation is recommended.

Caution

According to EU Directive 2003/10/EC, the permitted exposure threshold regarding the level of daily noise exposure is 80 dB(A).

- Should noise levels rise above this threshold, the system operator must provide the operator with information on exposure to noise and personal hearing protection and ensure that this is also worn (2003/10/EC Article 6).
-

Sound power level L_{WA}					
Compressor drive motor IP23 at 40 °C Pe in kW		Chiller / theoretical swept volume in m ³ /h at 2940 rpm L_{WA} in dB(A) mains operation 400 V/ 50 Hz			
	GEA Grasso	FX P 200 231	FX P 250 265	FX P 300 321	FX P 350 372
22	Max	91	91	91	
	Min	84	84	84	
30	Max	92	92	92	92
	Min	85	85	85	85
37	Max	93	93	93	93
	Min	86	86	86	86
45	Max	94	94	94	94
	Min	87	87	87	87
55	Max	95	95	95	95
	Min	88	88	88	88
75	Max	96	96	96	96
	Min	89	89	89	89
90	Max	97	97	97	97
	Min	90	90	90	90
110	Max		98	98	98
	Min		91	91	91
132	Max			98	99
	Min			92	92

Technical data

Information on noise emissions

Sound power level L_{WA}					
Compressor drive motor IP23 at 40 °C Pe in kW		Chiller / theoretical swept volume in m ³ /h at 2940 rpm L_{WA} in dB(A) mains operation 400 V/ 50 Hz			
	GEA Grasso	FX P 450 471	FX P 550 544	FX P 650 690	FX P 800 805
37	Max	93			
	Min	86			
45	Max	94	94		
	Min	87	87		
55	Max	95	95	95	95
	Min	88	88	88	88
75	Max	96	96	96	96
	Min	89	89	89	89
90	Max	97	97	97	97
	Min	90	90	90	90
110	Max	98	98	98	98
	Min	91	91	91	91
132	Max	99	99	99	99
	Min	92	92	92	92
160	Max	100	100	100	100
	Min	93	93	93	93
200	Max			101	101
	Min			94	94
250	Max				102
	Min				95

Sound power level L_{WA}					
Compressor drive motor IP23 at 40 °C Pe in kW		Chiller / theoretical swept volume in m ³ /h at 2940 rpm L_{WA} in dB(A) mains operation 400 V/ 50 Hz			
	GEA Grasso	FX P 900 860	FX P 1100 1040	FX P 1300 1290	FX P 1500 1465
55	Max	95			
	Min	88			
75	Max	96	96		
	Min	89	89		
90	Max	97	97	97	
	Min	90	90	90	
110	Max	98	98	98	98
	Min	91	91	91	91
132	Max	99	99	99	99
	Min	92	92	92	92
160	Max	100	100	100	100
	Min	93	93	93	93
200	Max	101	101	101	101
	Min	94	94	94	94
250	Max	102	102	102	102
	Min	95	95	95	95
315	Max		103	103	103
	Min		96	96	96
400	Max		104	104	104
	Min		97	97	97
450	Max			104	104
	Min			98	98
500	Max				105
	Min				98
560	Max				105
	Min				99

Technical data

Information on noise emissions

Sound power level L_{WA}					
Compressor drive motor IP23 at 40 °C Pe in kW		Chiller / theoretical swept volume in m ³ /h at 2940 rpm L_{WA} in dB(A) mains operation 400 V/ 50 Hz			
	GEA Grasso	FX P 1700 1640	FX P 2000 1996	FX P 2400 2296	FX P 2800 2748
110	Max	98			
	Min	91			
132	Max	99	99	99	
	Min	92	92	92	
160	Max	100	100	100	100
	Min	93	93	93	93
200	Max	101	101	101	101
	Min	94	94	94	94
250	Max	102	102	102	102
	Min	95	95	95	95
315	Max	103	103	103	103
	Min	96	96	96	96
400	Max	104	104	104	104
	Min	97	97	97	97
450	Max	104	104	104	104
	Min	98	98	98	98
500	Max	105	105	105	105
	Min	98	98	98	98
560	Max	105	105	105	105
	Min	99	99	99	99
630	Max		105	105	105
	Min		99	99	99
710	Max				105
	Min				99
800					106
					99

Sound power level L_{WA}					
Compressor drive motor IP23 at 40 °C Pe in kW		Chiller / theoretical swept volume in m ³ /h at 2940 rpm L_{WA} in dB(A) mains operation 400 V/ 50 Hz			
	GEA Grasso	FX P 3300 3250	FX P 4200 4150	FX P 5000 4900	FX P 5800 8560
200	Max	101			
	Min	94			
250	Max	102	103		
	Min	95	100		
315	Max	103	104	104	105
	Min	96	100	100	101
400	Max	104	104	104	105
	Min	97	100	100	101
450	Max	104	104	104	105
	Min	98	100	100	101
500	Max	105	105	105	105
	Min	99	100	100	101
560	Max	105	105	105	105
	Min	100	100	100	101
630	Max	105	106	106	106
	Min	99	100	100	101
710	Max	106	106	106	106
	Min	99	100	100	101
800	Max	106	106	106	106
	Min	99	100	100	101
900	Max		107	107	107
	Min		100	100	101
1000	Max			107	107
	Min			100	101

Sound power level L_{WA}					
Compressor drive motor IP23 at 40 °C Pe in kW		Chiller / theoretical swept volume in m ³ /h at 2940 rpm L_{WA} in dB(A) mains operation 400 V/ 50 Hz			
	GEA Grasso	FX P 7000 7170	FX P 8000 8560		
400	Max	105	105		
	Min	102	102		
450	Max	105	105		
	Min	102	102		
500	Max	105	105		
	Min	102	102		
560	Max	105	105		
	Min	102	102		
630	Max	106	106		
	Min	102	102		
710	Max	106	106		
	Min	102	102		
800	Max	106	106		
	Min	102	102		
900	Max	107	107		
	Min	102	102		
1000	Max	107	107		
	Min	102	102		

Notice

For chillers in the **GEA Grasso FX Pduo** design, the data from the above table must be added logarithmically for the respective compressor/motor combination.

► Noise emissions from external condensers are not taken into account.

6 Application form

GEA Refrigeration Germany GmbH supplies products of high quality and reliability. With regard to project requirements, every product is configured, constructed and manufactured individually.

Are you looking for the optimum solution for your application? Contact GEA sales and on request, we can provide you with an application form that you can also conveniently fill in and send away electronically.

You can find an overview of sales offices and contacts at:

www.gea.com

6.1 Manufacturer address

GEA Refrigeration Germany GmbH is a company of the GEA Group AG and provides its customers around the world with high-quality components and services for refrigeration and process technology applications.

Locations:

GEA Refrigeration Germany GmbH

Werk Berlin

Holzhauser Str. 165

13509 Berlin, Germany

Tel.: +49 30 43592-600

Fax: +49 30 43592-777

Web:www.gea.com

E-Mail: refrigeration@gea.com

GEA Refrigeration Germany GmbH

Werk Halle

Berliner Straße 130

06258 Schkopau/ OT Döllnitz, Germany

Tel.: +49 345 78 236 - 0

Fax: +49 345 78 236 - 14

Web:www.gea.com

E-Mail: refrigeration@gea.com

GEA Refrigeration Germany GmbH
Holzhauser Str. 165
13509 Berlin , Germany

Phone +49 30 43592-600

Copyright © GEA Refrigeration - All rights reserved - Subject to modifications.